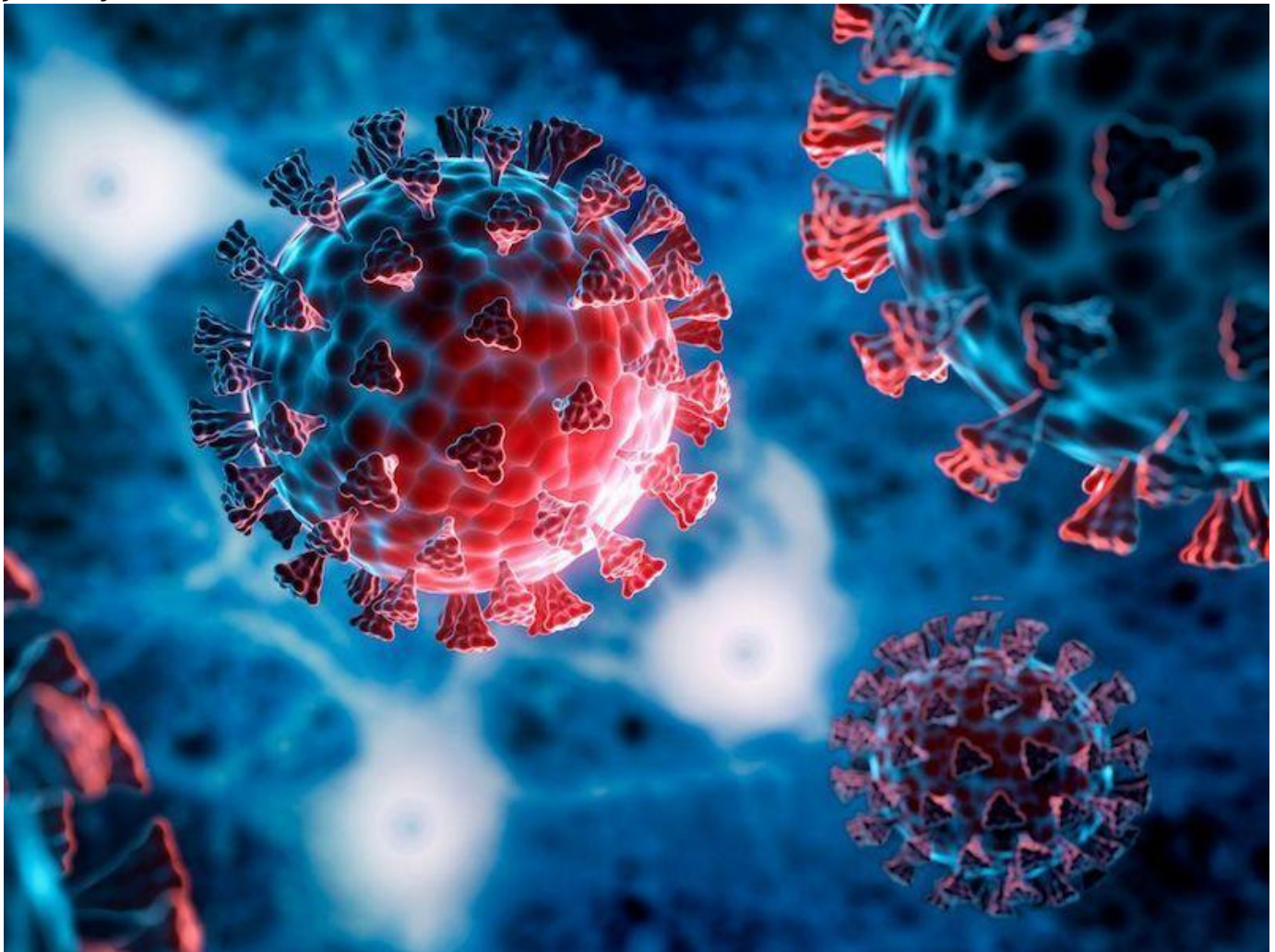


Study: This protein may be the 'glue' that helps COVID virus stick

Andrew Yawn

ayawn@tulane.edu

January 24, 2024 5:52 PM



A new study found that a protein most commonly found in blood vessels and the brain may enhance COVID-19's ability to bind with cells. (Photo by iStock)

New research from Tulane University, conducted in partnership with Florida International University and published in [Protein Science](#), has identified a protein that may be the glue that helps COVID's spike protein stick. [Dr. Gregory Bix](#), director of Tulane University School of Medicine's Clinical Neuroscience Research Center, is the study's corresponding author. [Read the full story here.](#)