

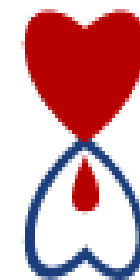
Tulane University
SCHOOL OF MEDICINE



Tulane
University

SCHOOL OF SOCIAL WORK

DAILY REPORTS
2 APRIL 2020



THE BLOOD CENTER

Serving you for life!

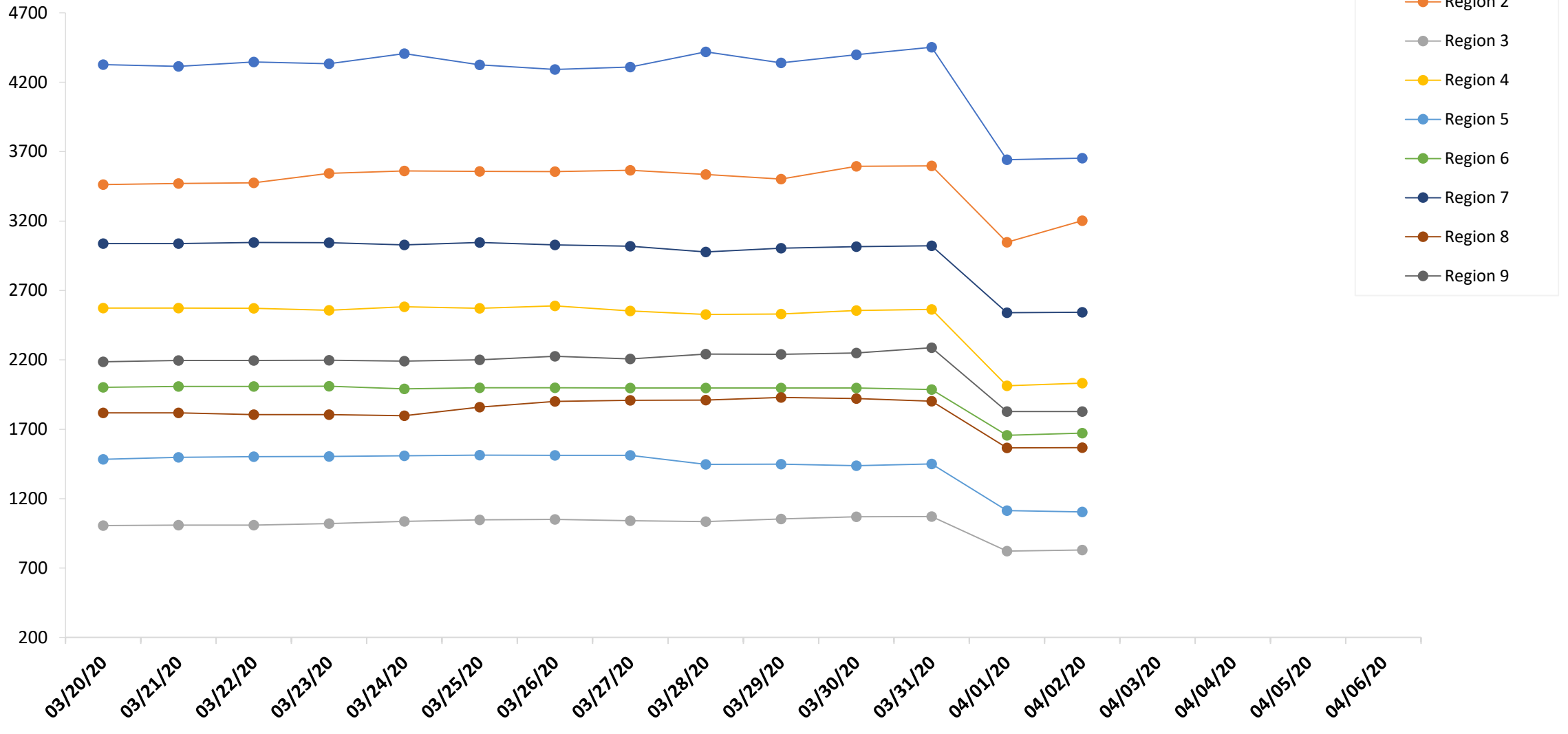
LOUISIANA

EMERGENCY RESPONSE NETWORK

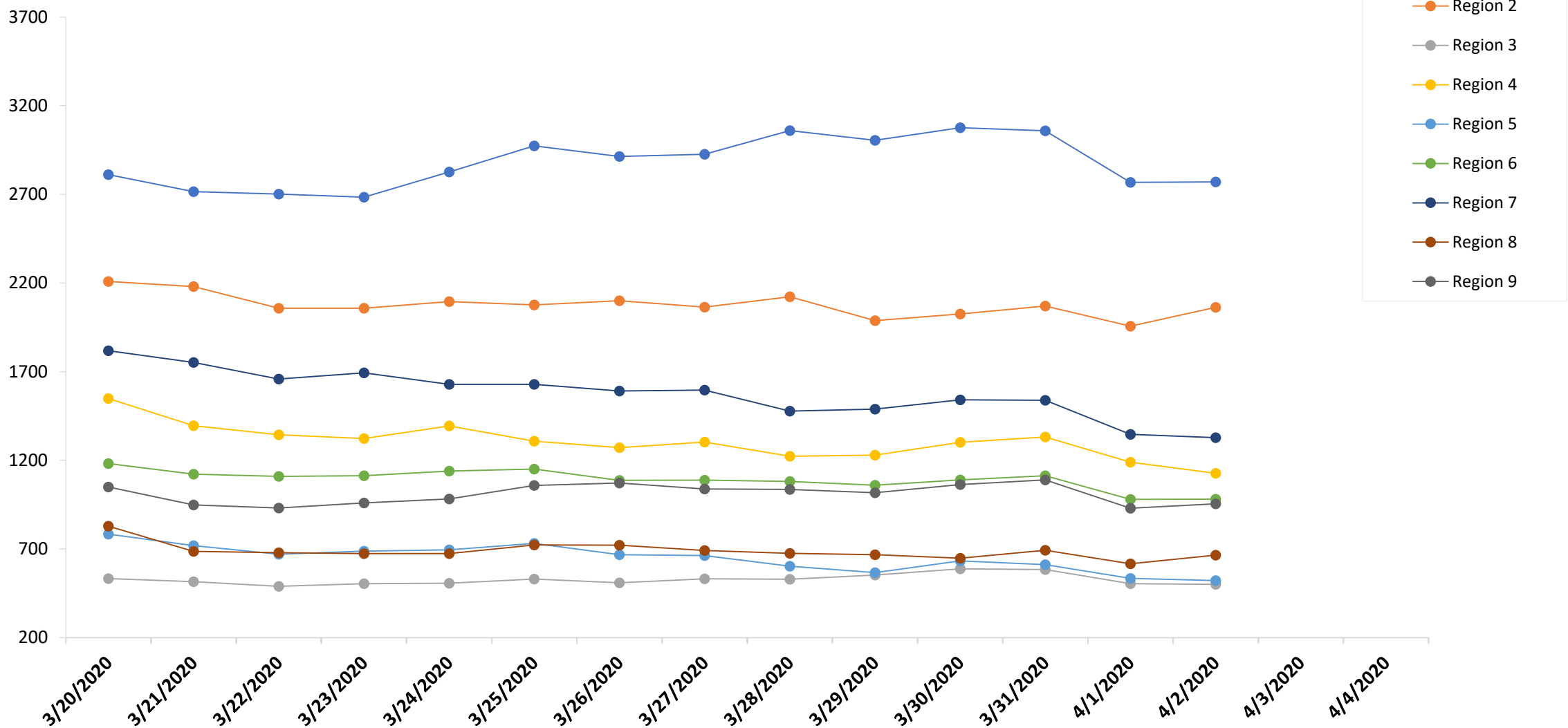


Utilization of Total Beds in Louisiana Hospitals

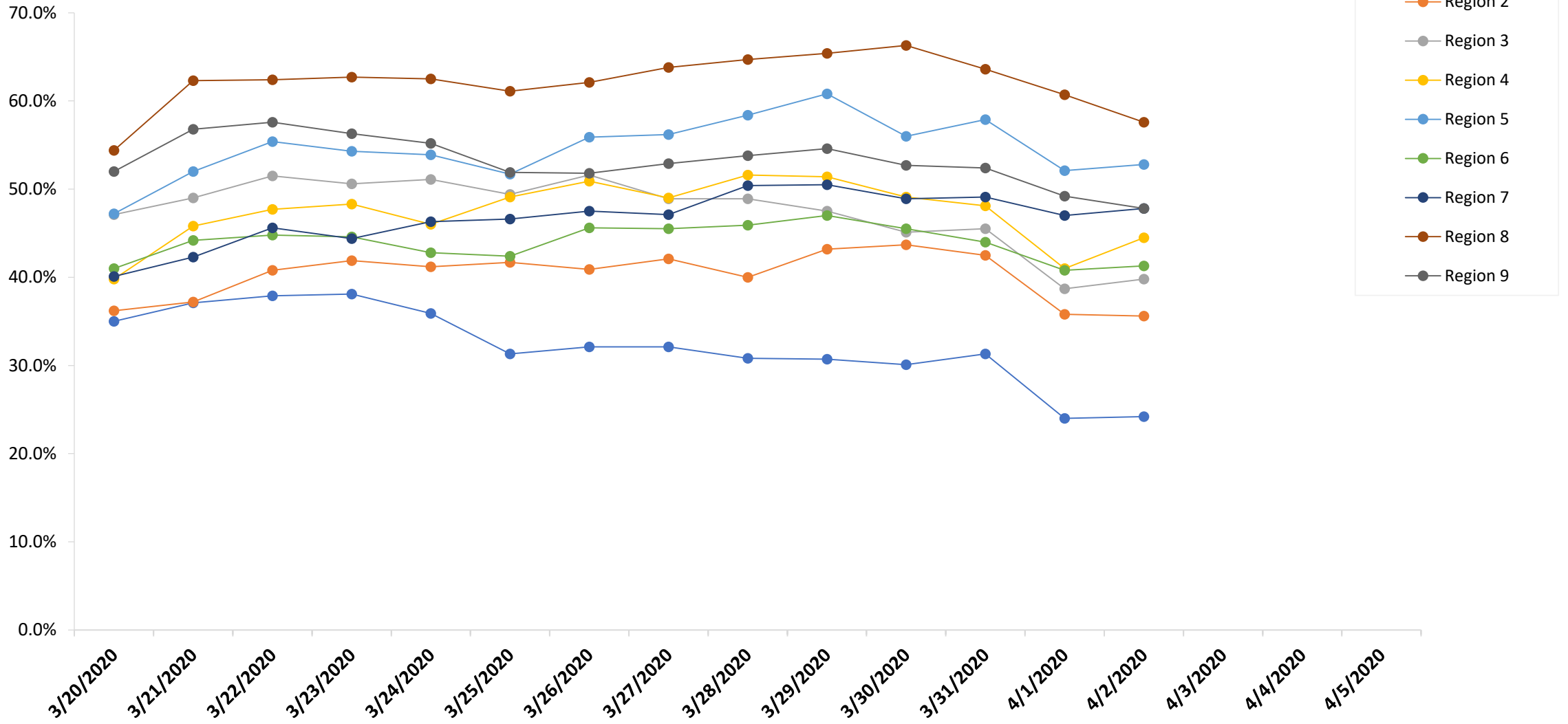
Total Bed Capacity



Current Census



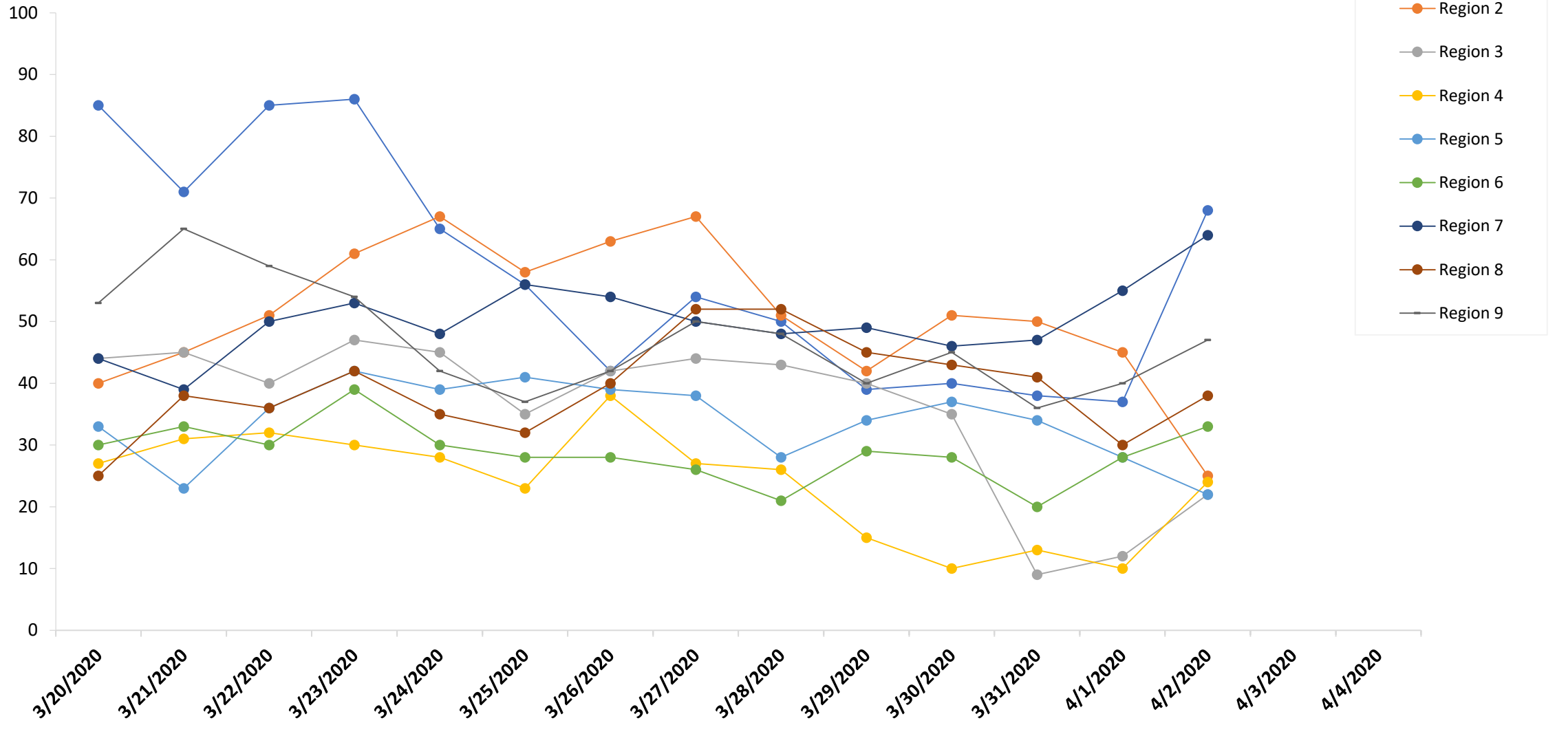
Available Capacity



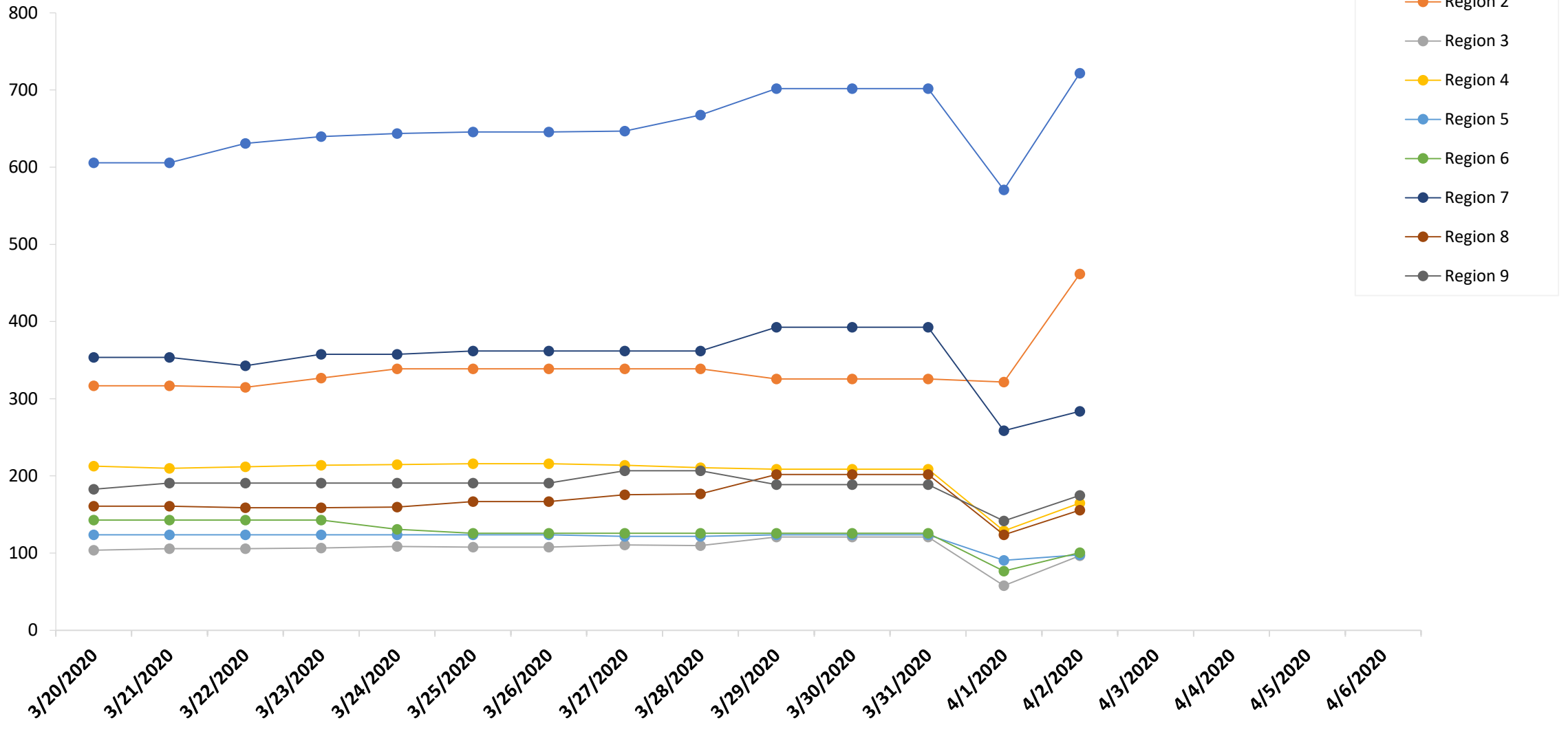


ICU Bed Utilization by Region

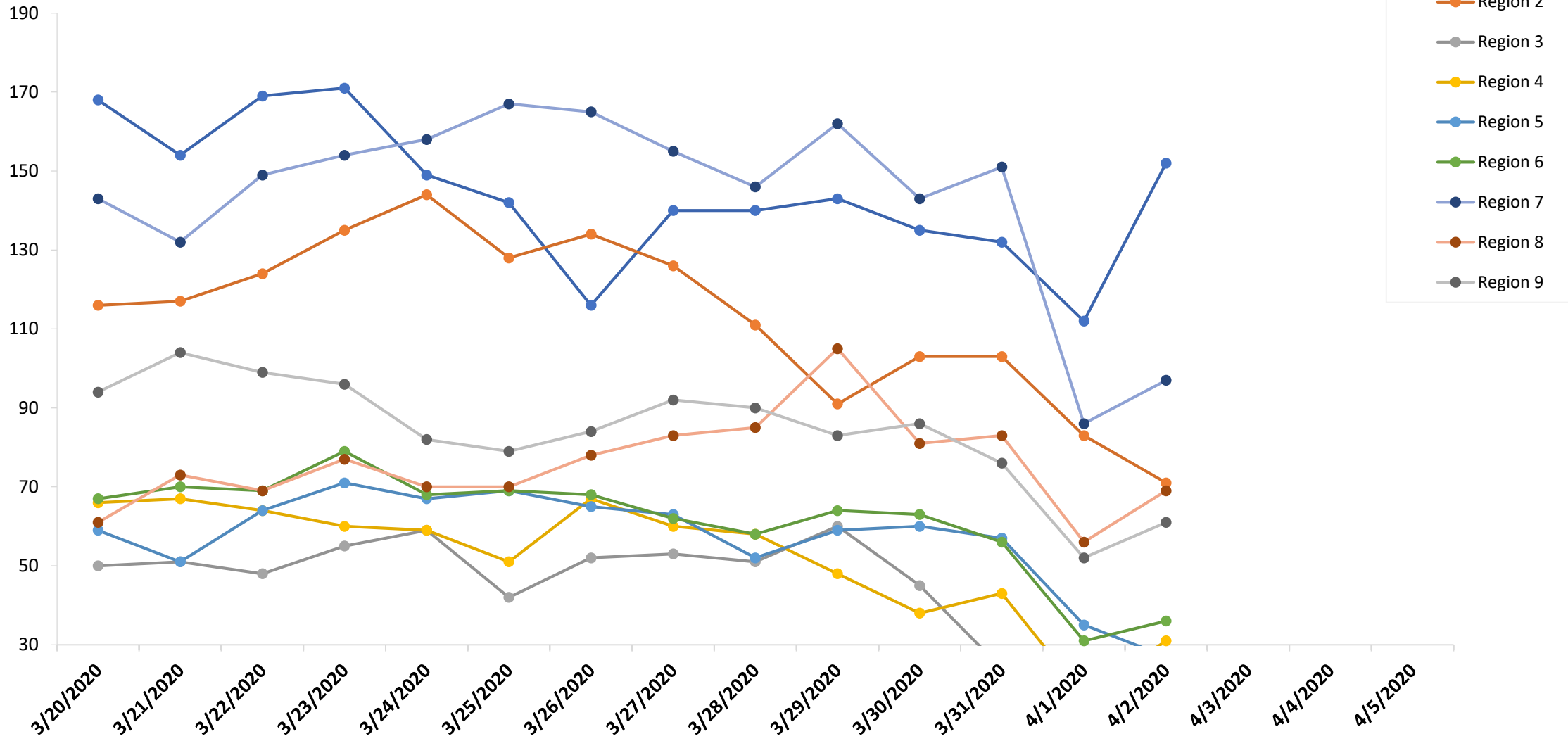
Critical Care - Adult - Available beds



Total Capacity



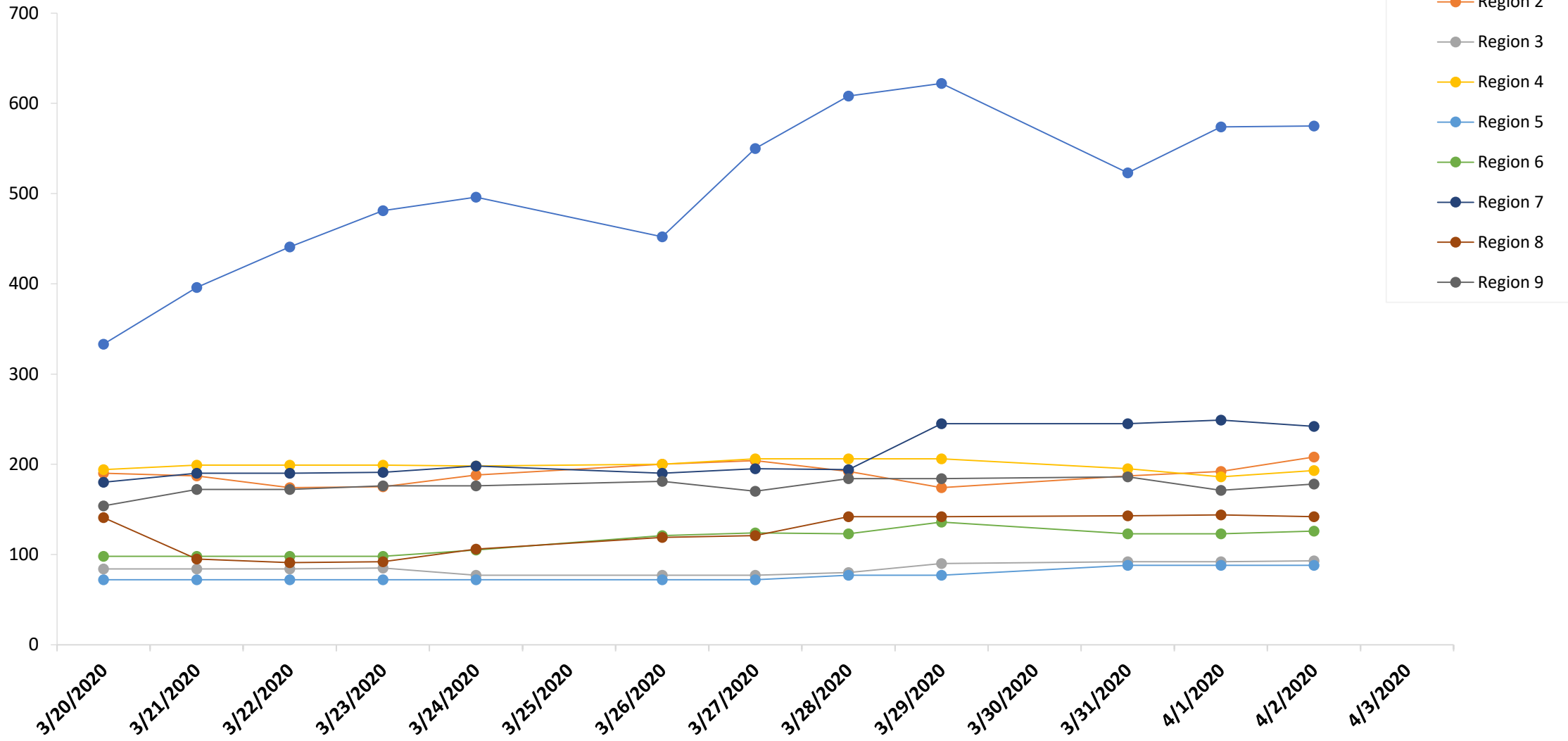
Total Available Beds



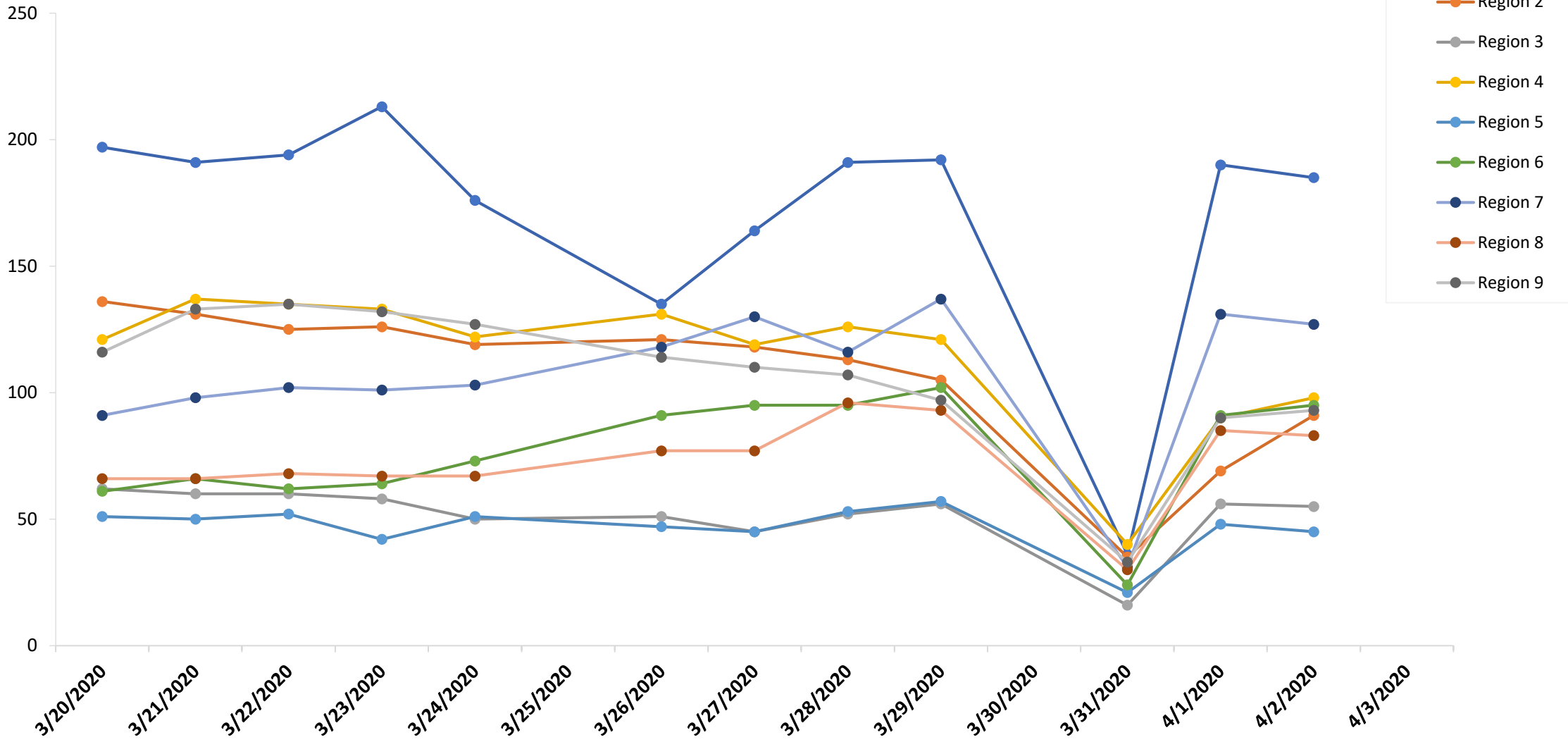


Ventilation report

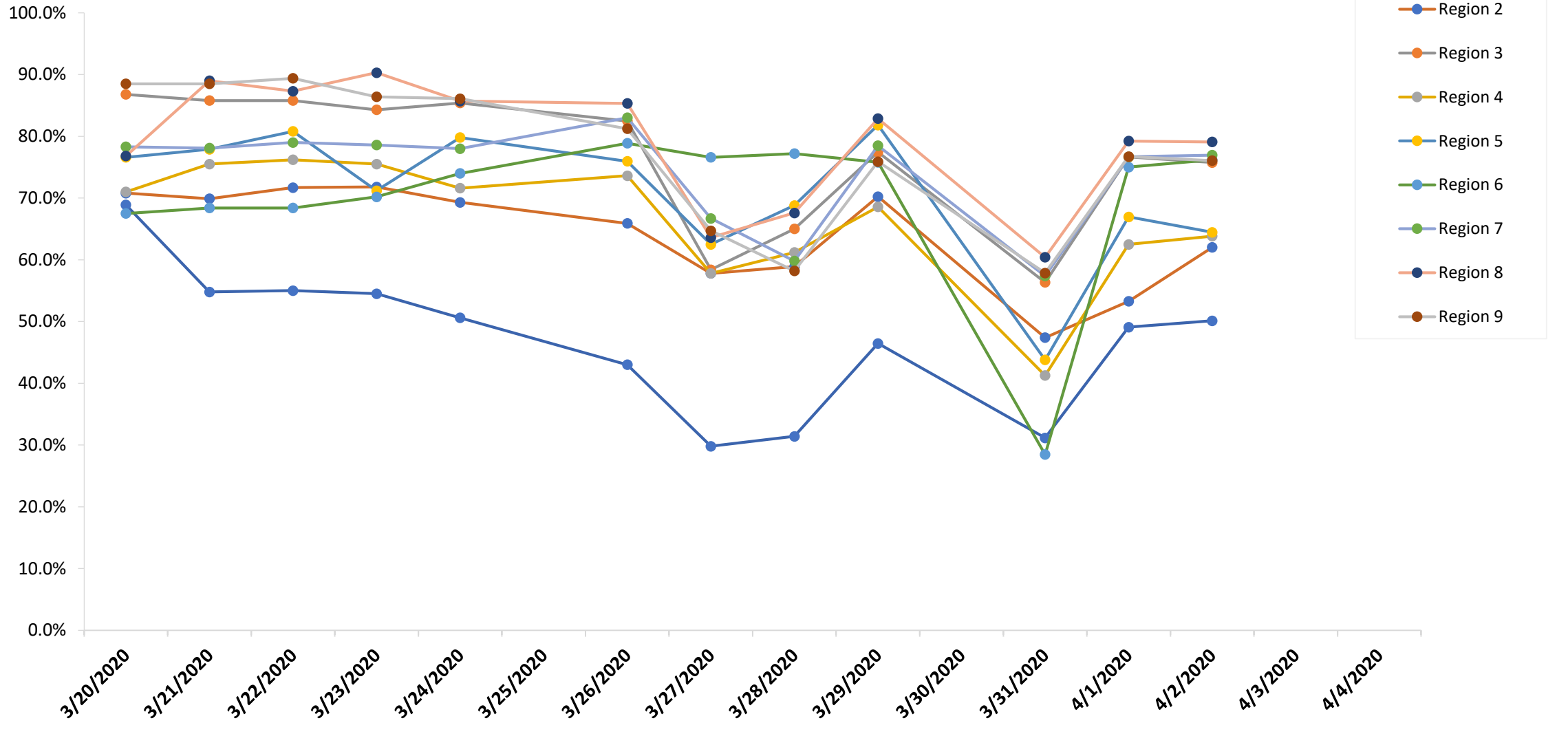
Hospital Vents



Hospital Vents Available

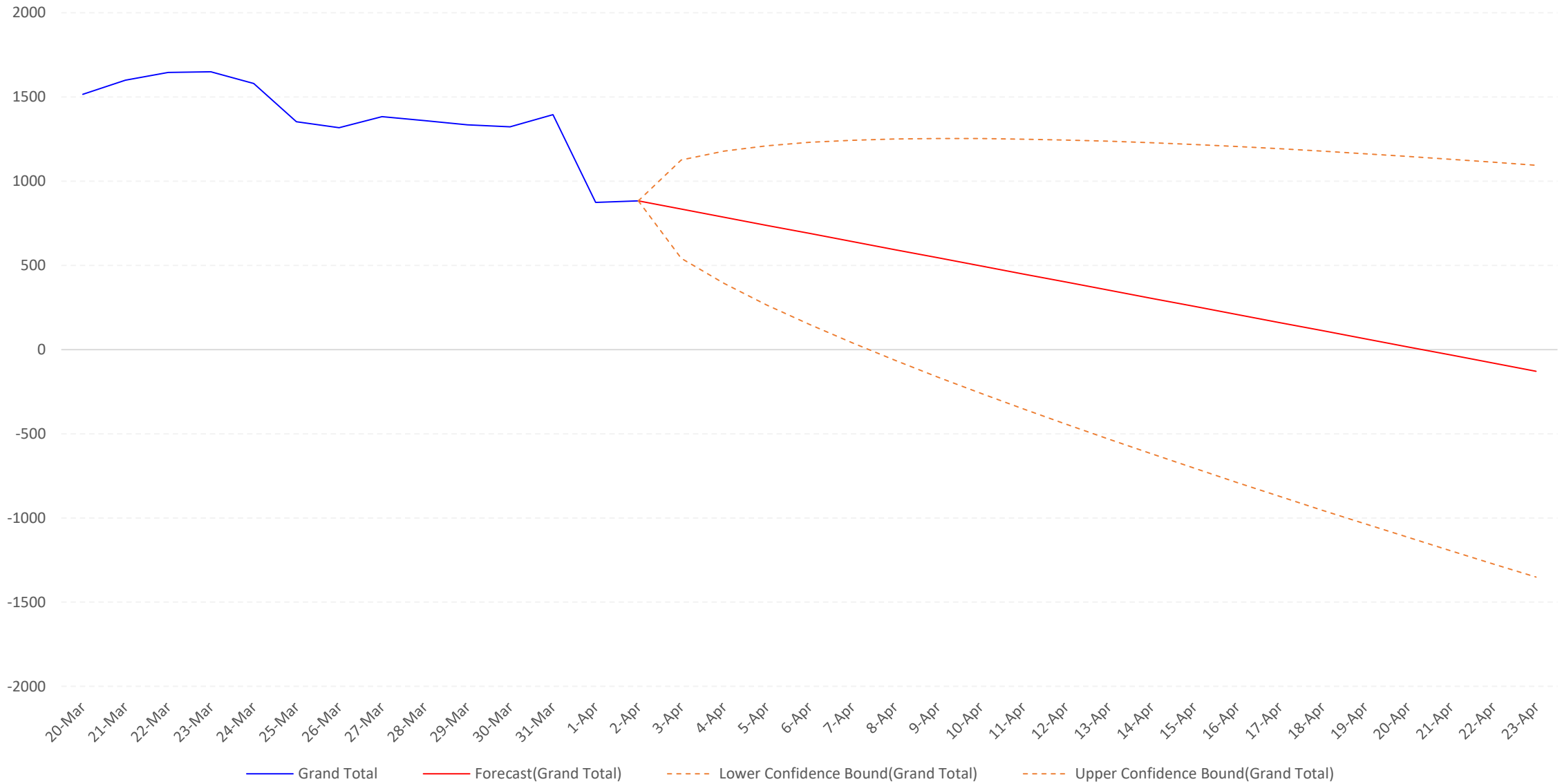


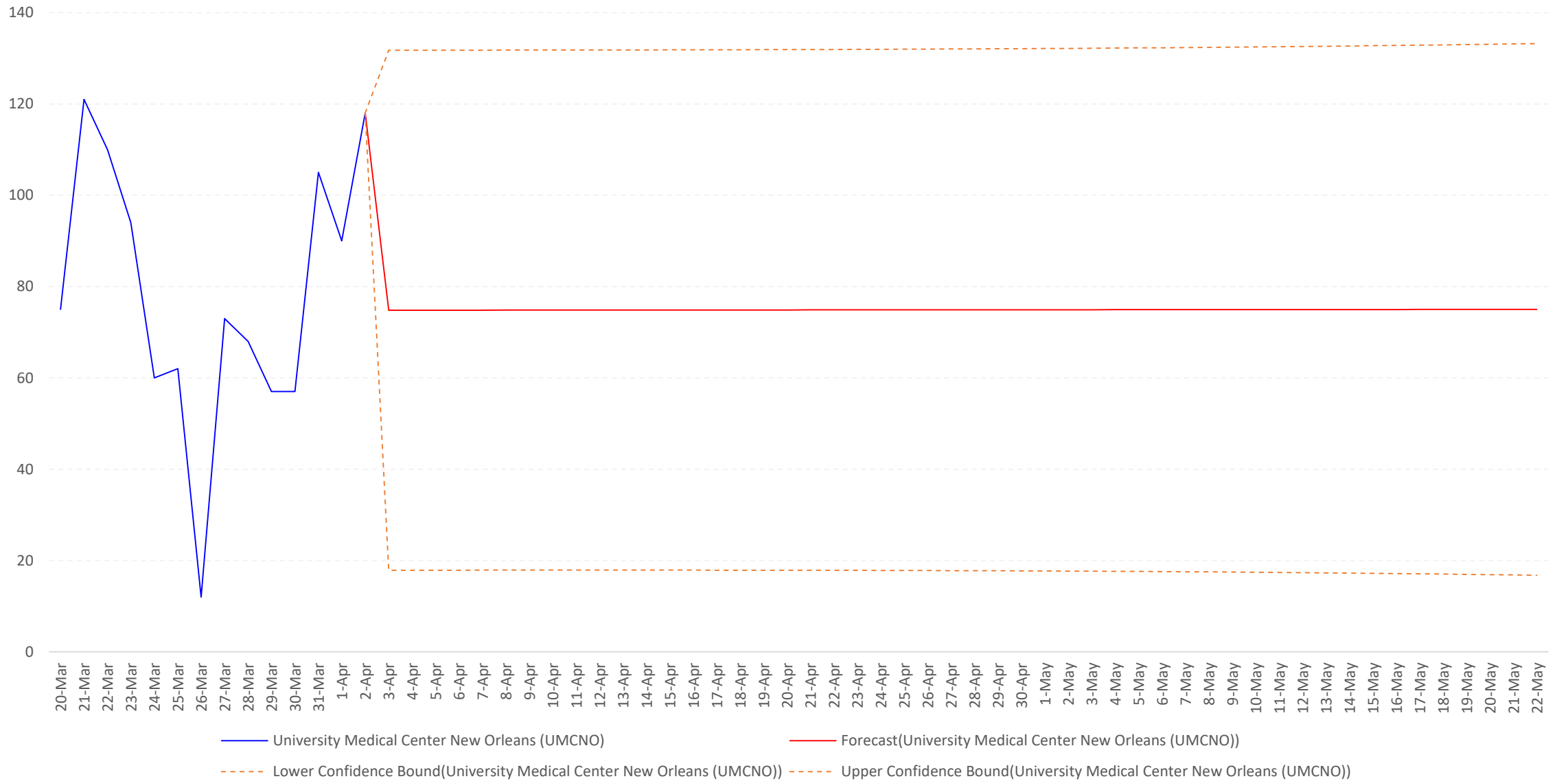
% Available

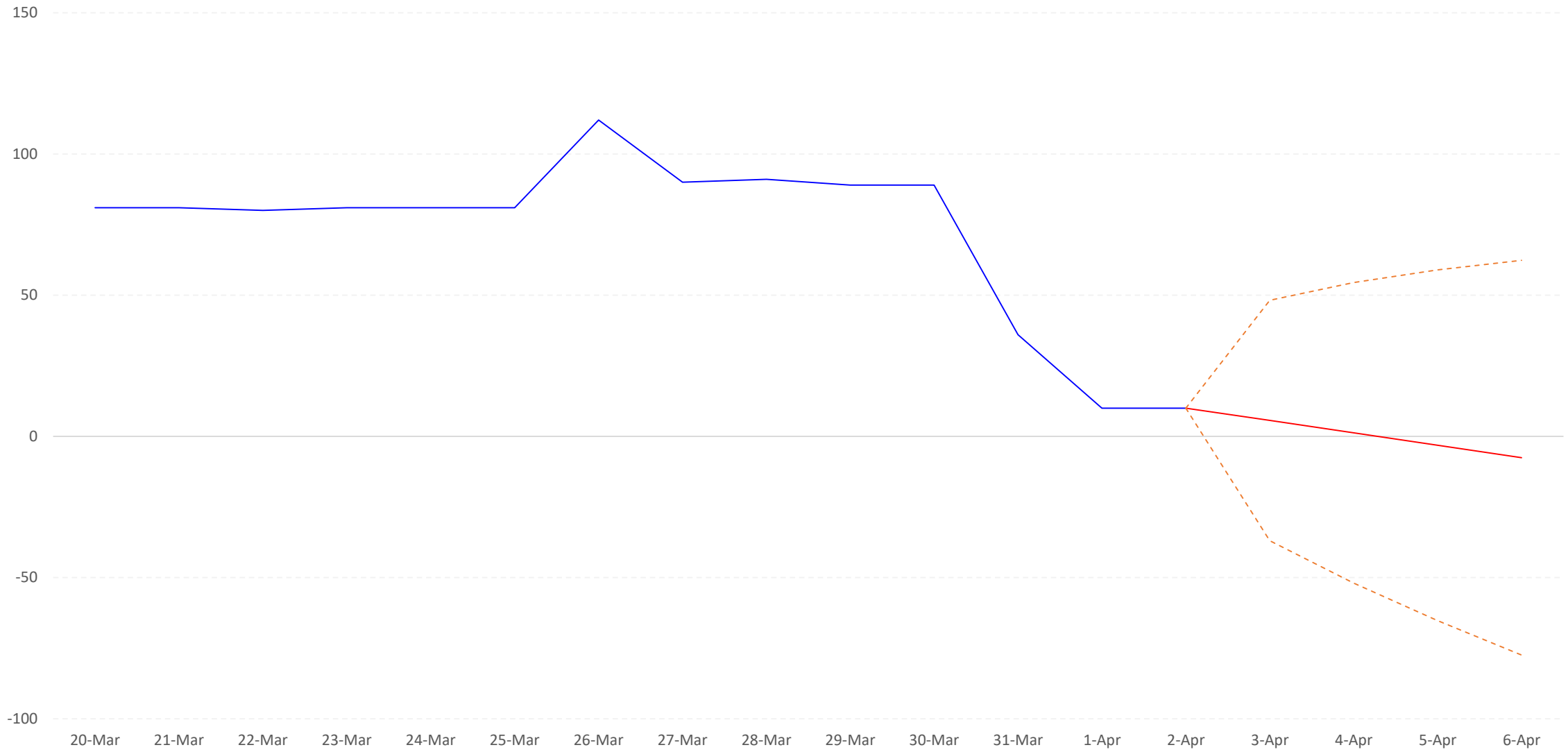




Predicted hospital bed full
saturation





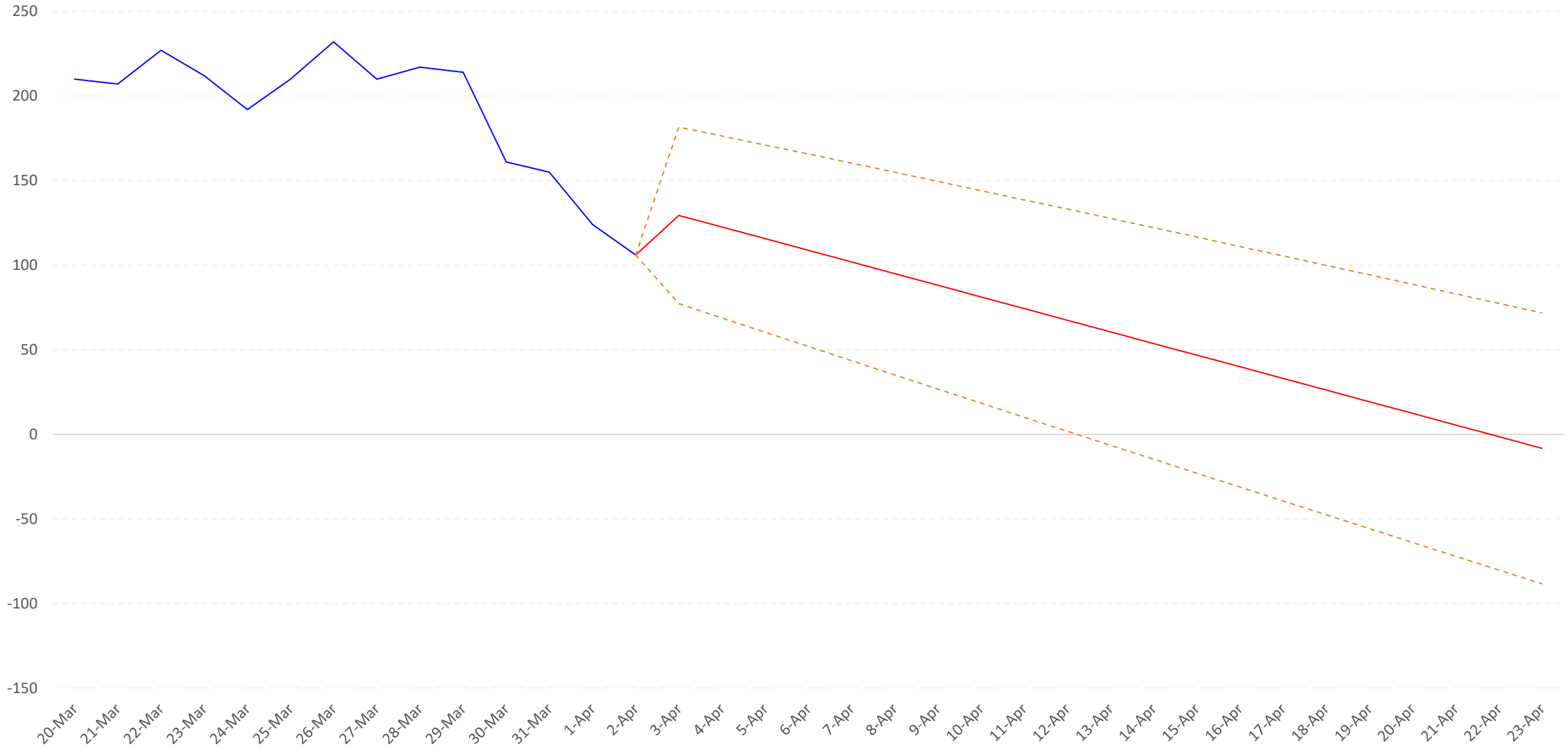


Tulane Medical Center

Forecast(Tulane Medical Center)

Lower Confidence Bound(Tulane Medical Center)

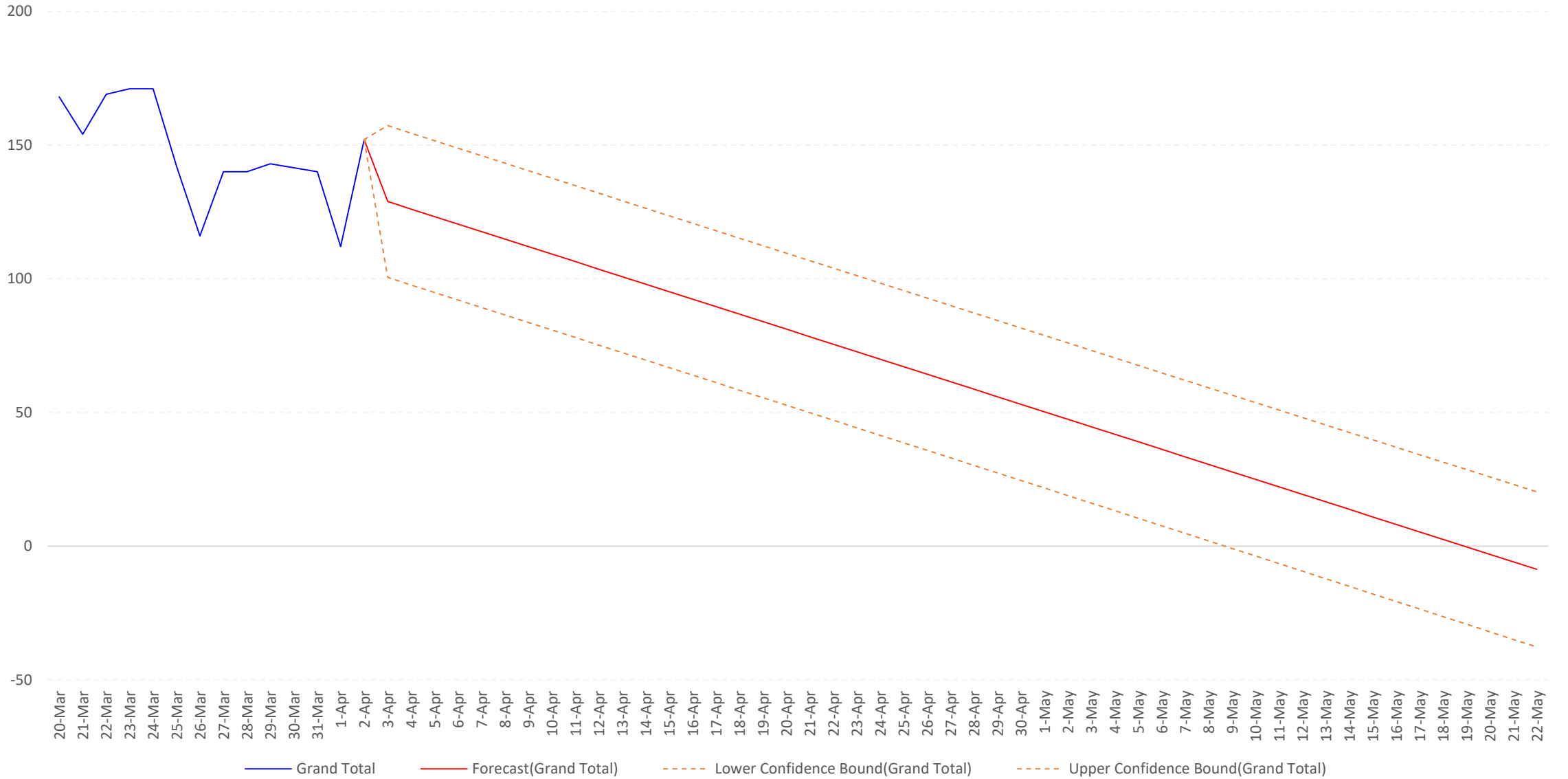
Upper Confidence Bound(Tulane Medical Center)

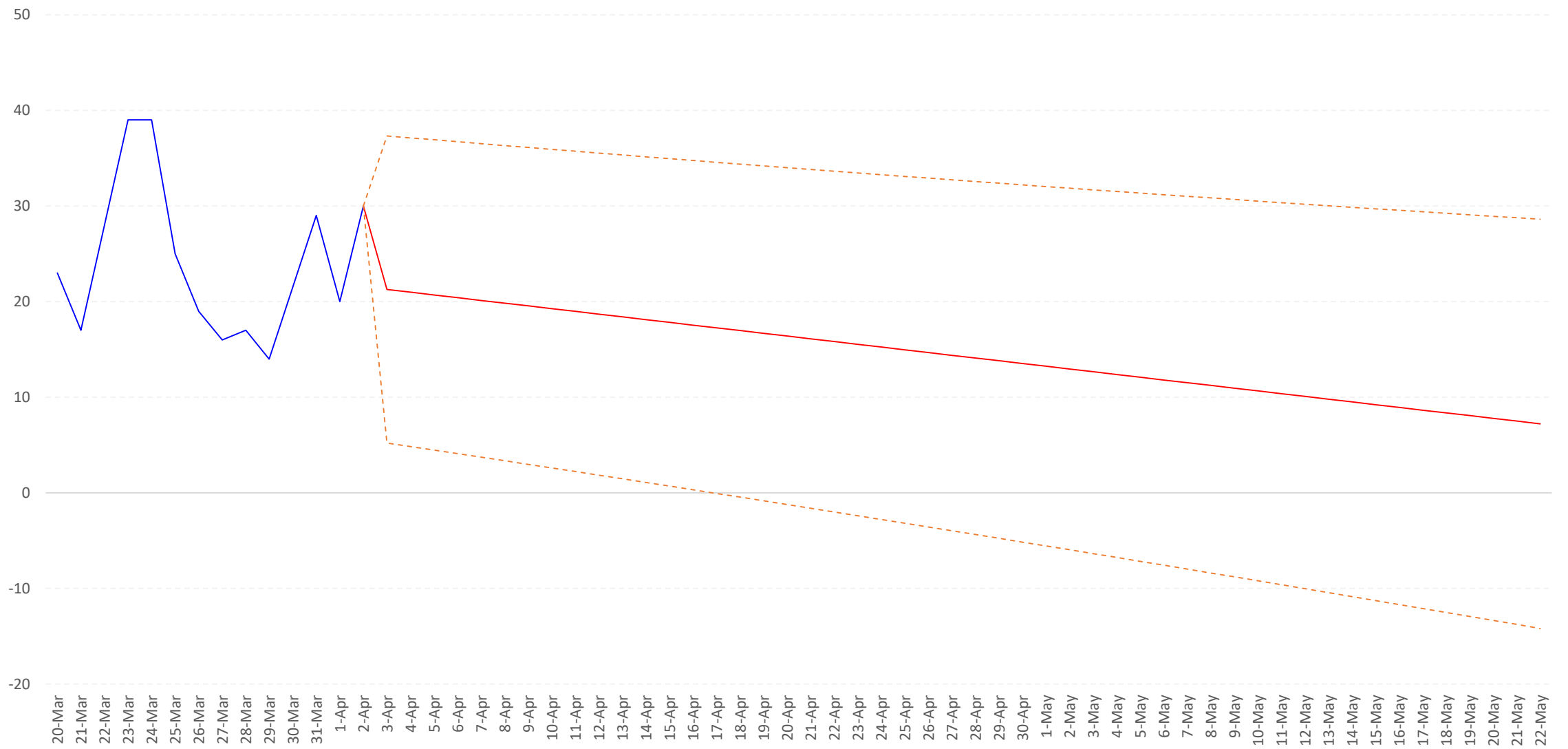


— Ochsner Medical Center
 — Forecast(Ochsner Medical Center)
 - - - Lower Confidence Bound(Ochsner Medical Center)
 - - - Upper Confidence Bound(Ochsner Medical Center)

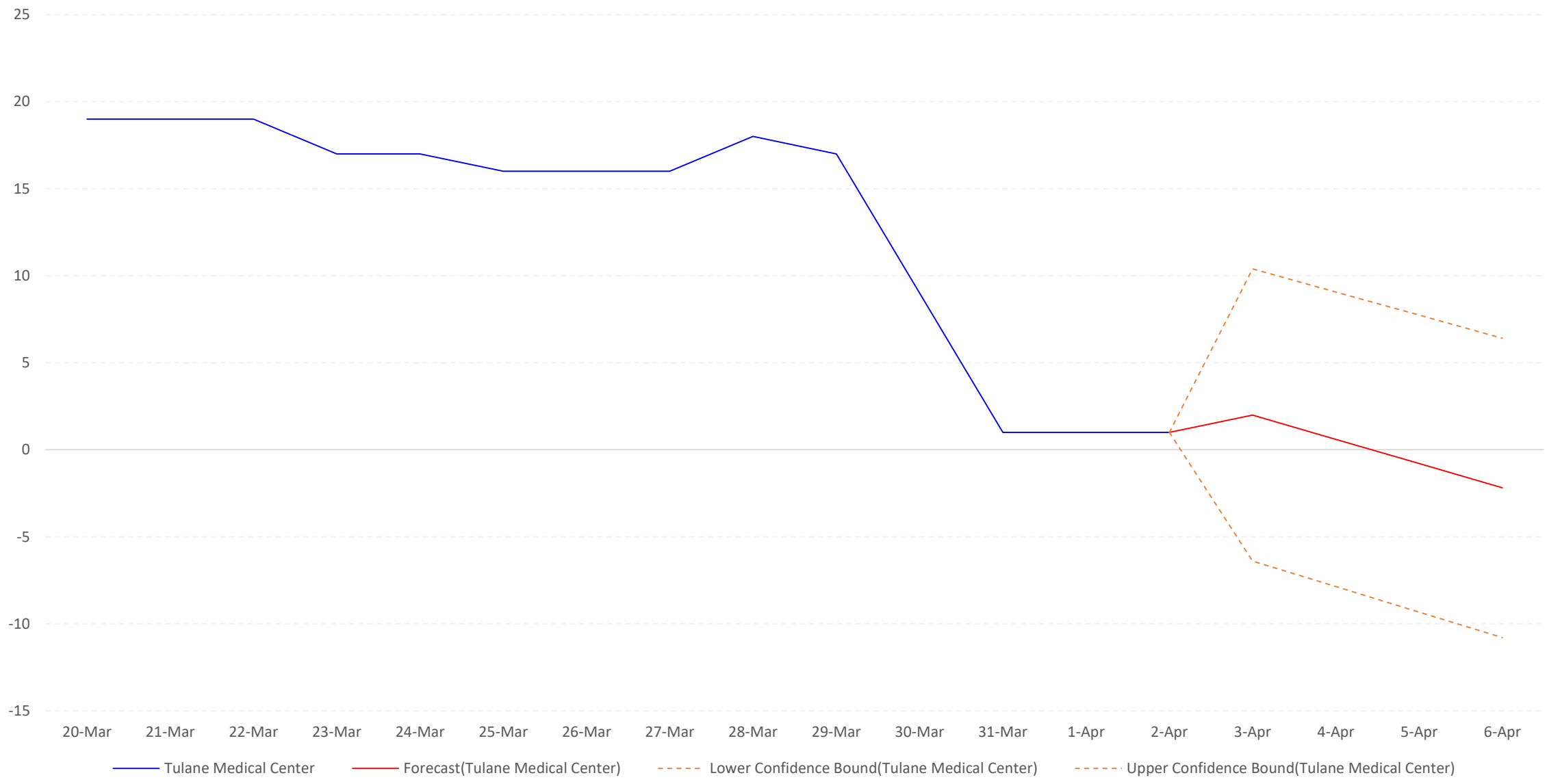


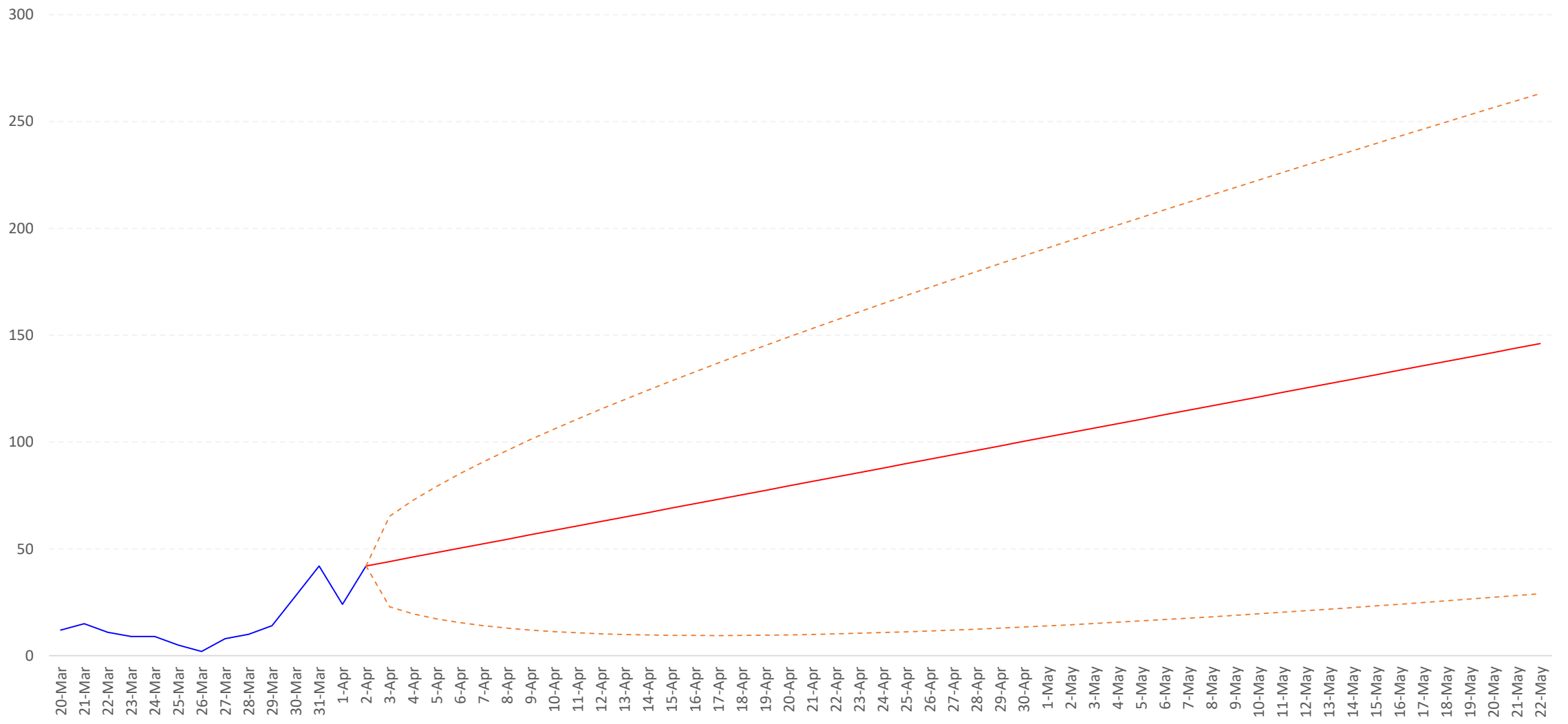
Predicted ICU bed full
saturation





— Ochsner Medical Center
 — Forecast(Ochsner Medical Center)
 - - - Lower Confidence Bound(Ochsner Medical Center)
 - - - Upper Confidence Bound(Ochsner Medical Center)



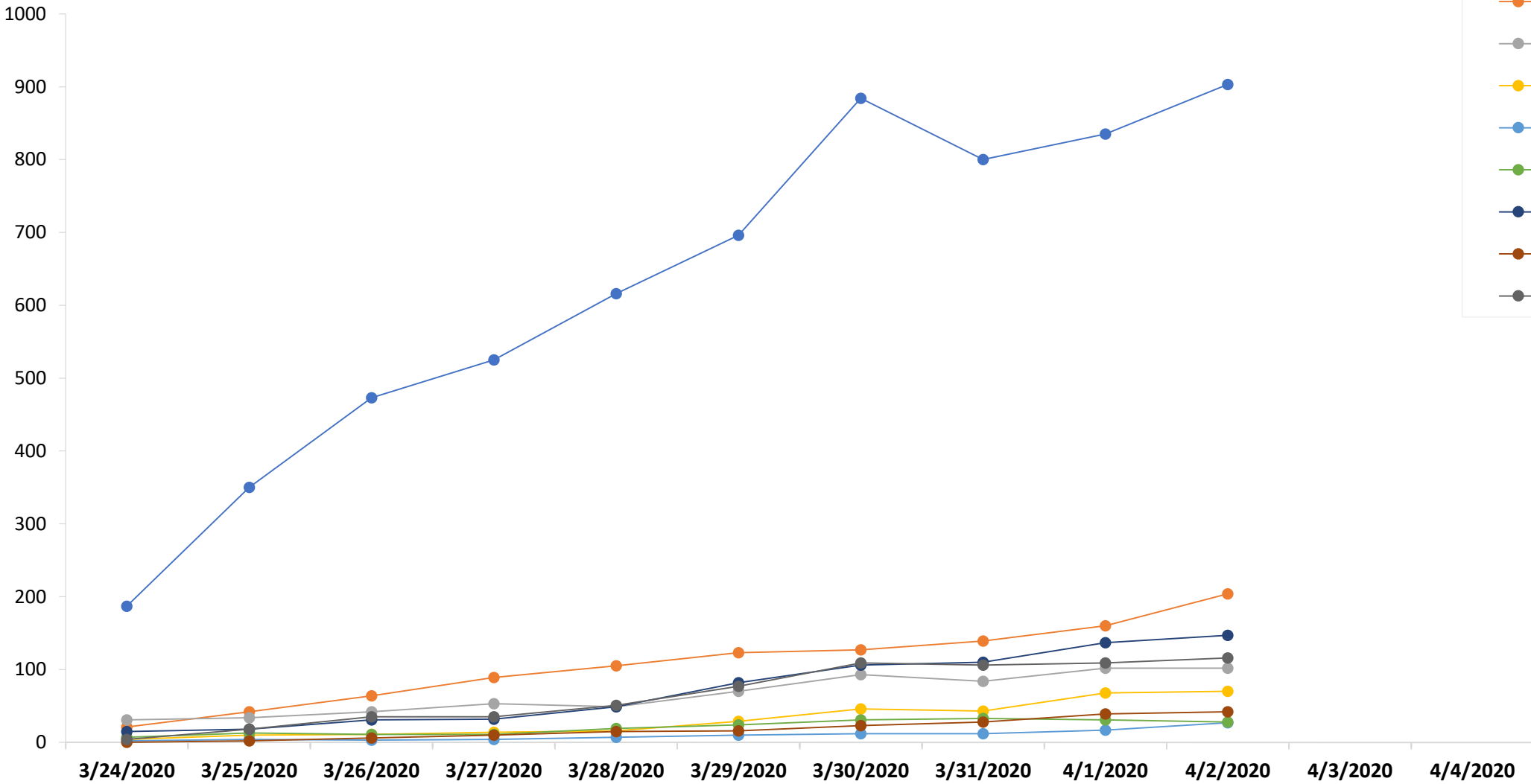


— University Medical Center New Orleans (UMCNO)
 — Forecast(University Medical Center New Orleans (UMCNO))
 - - - Lower Confidence Bound(University Medical Center New Orleans (UMCNO))
 - - - Upper Confidence Bound(University Medical Center New Orleans (UMCNO))

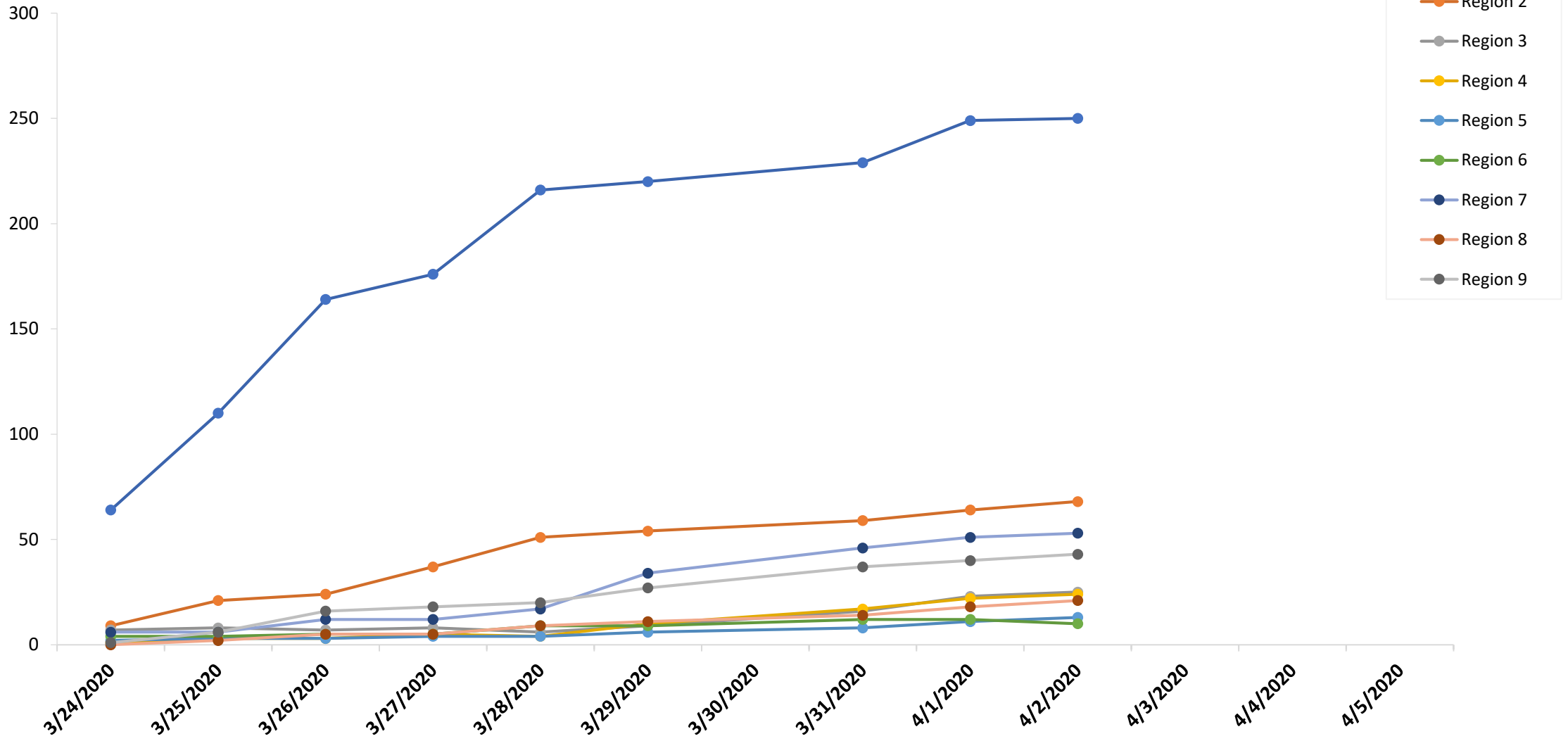


**Preliminary Hospitalized
COVID-19 Patient Data**

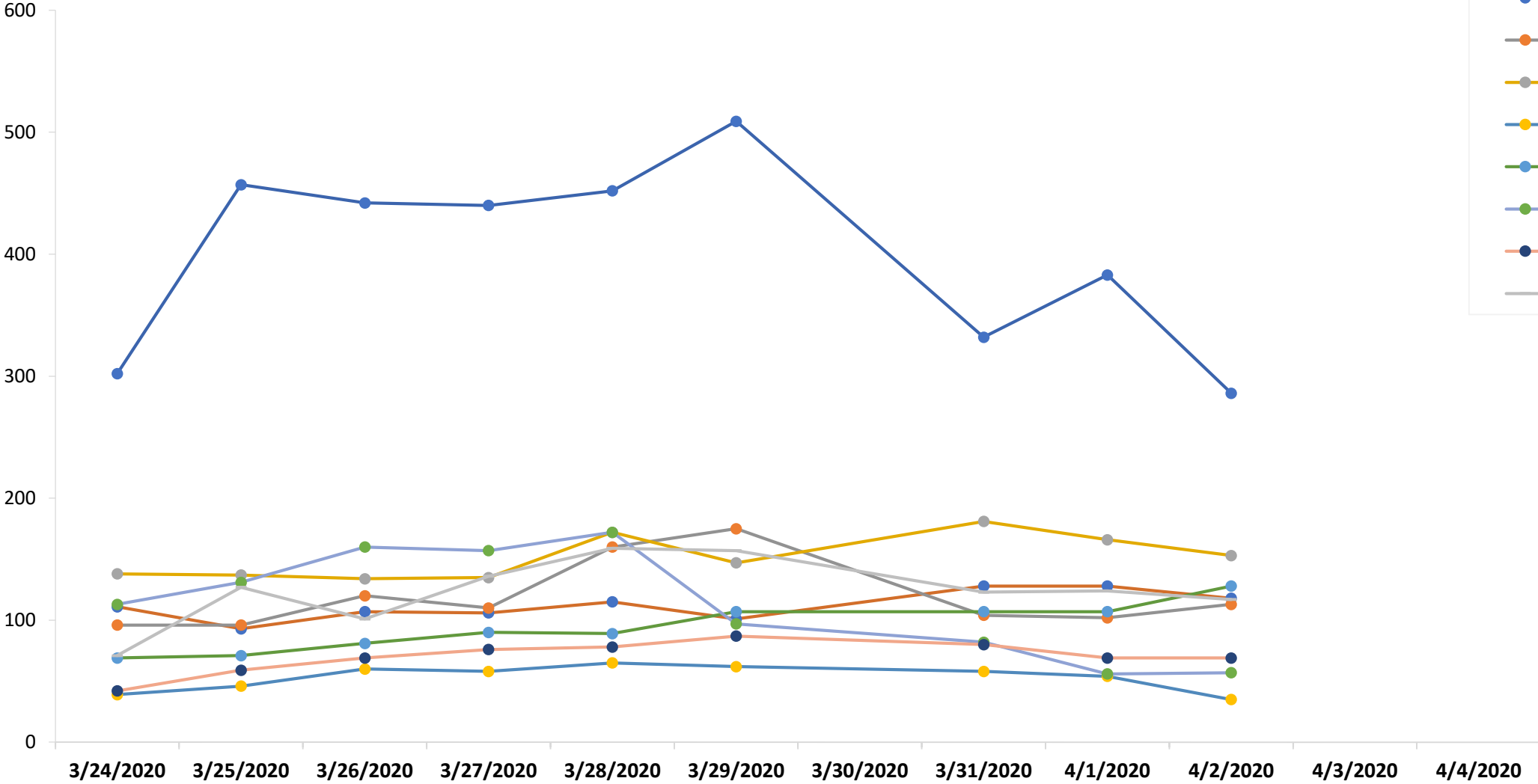
Total COVID-Positive Patients



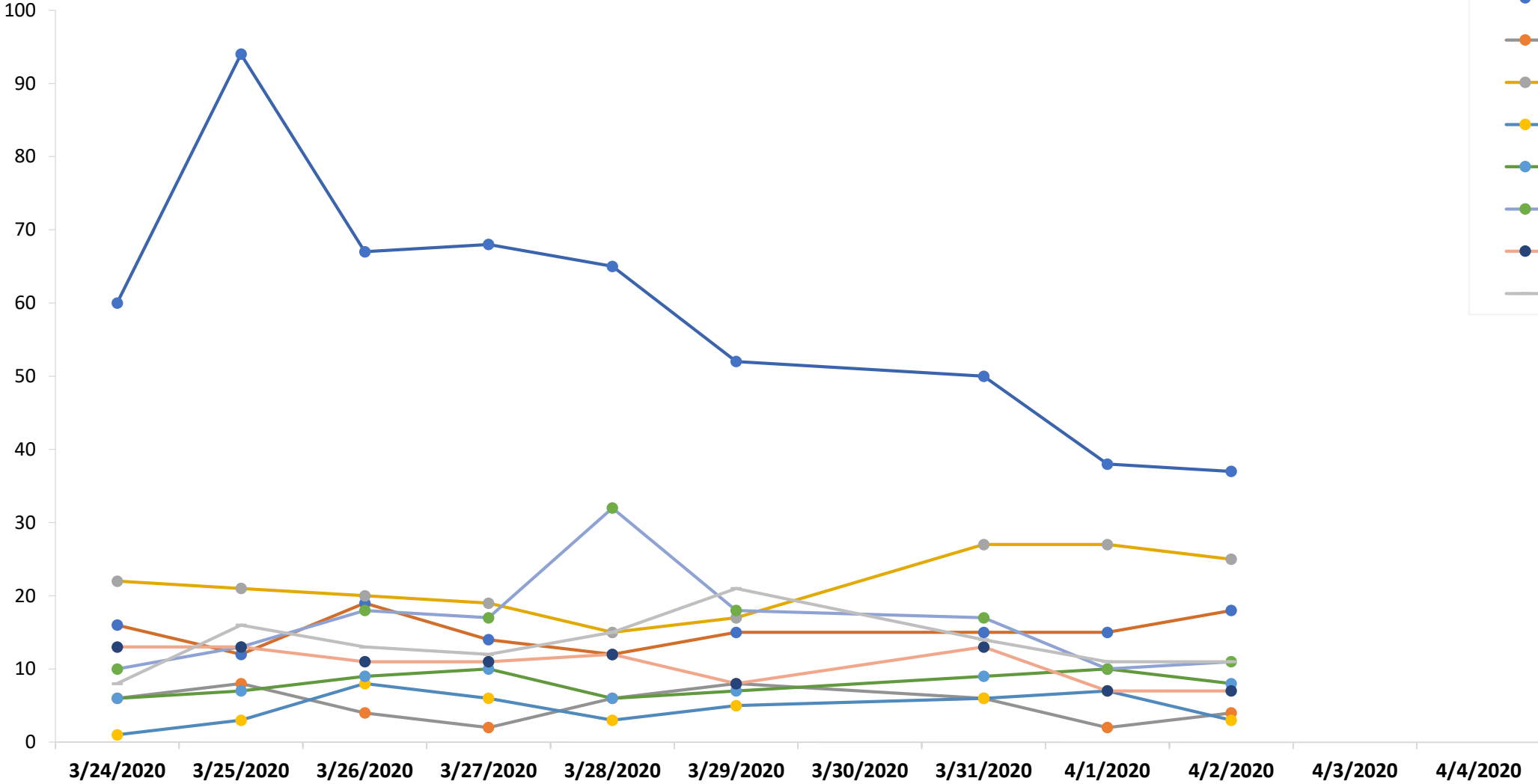
Total COVID-Positive, # on Vents

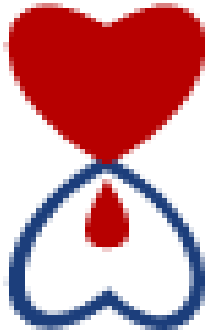


Total COVID-Pending Patients



COVID-Pending, # on Vents





THE BLOOD CENTER

Serving you for life!

**HEALTHY DONORS
NEEDED NOW!**

Our Donor Centers are OPEN!

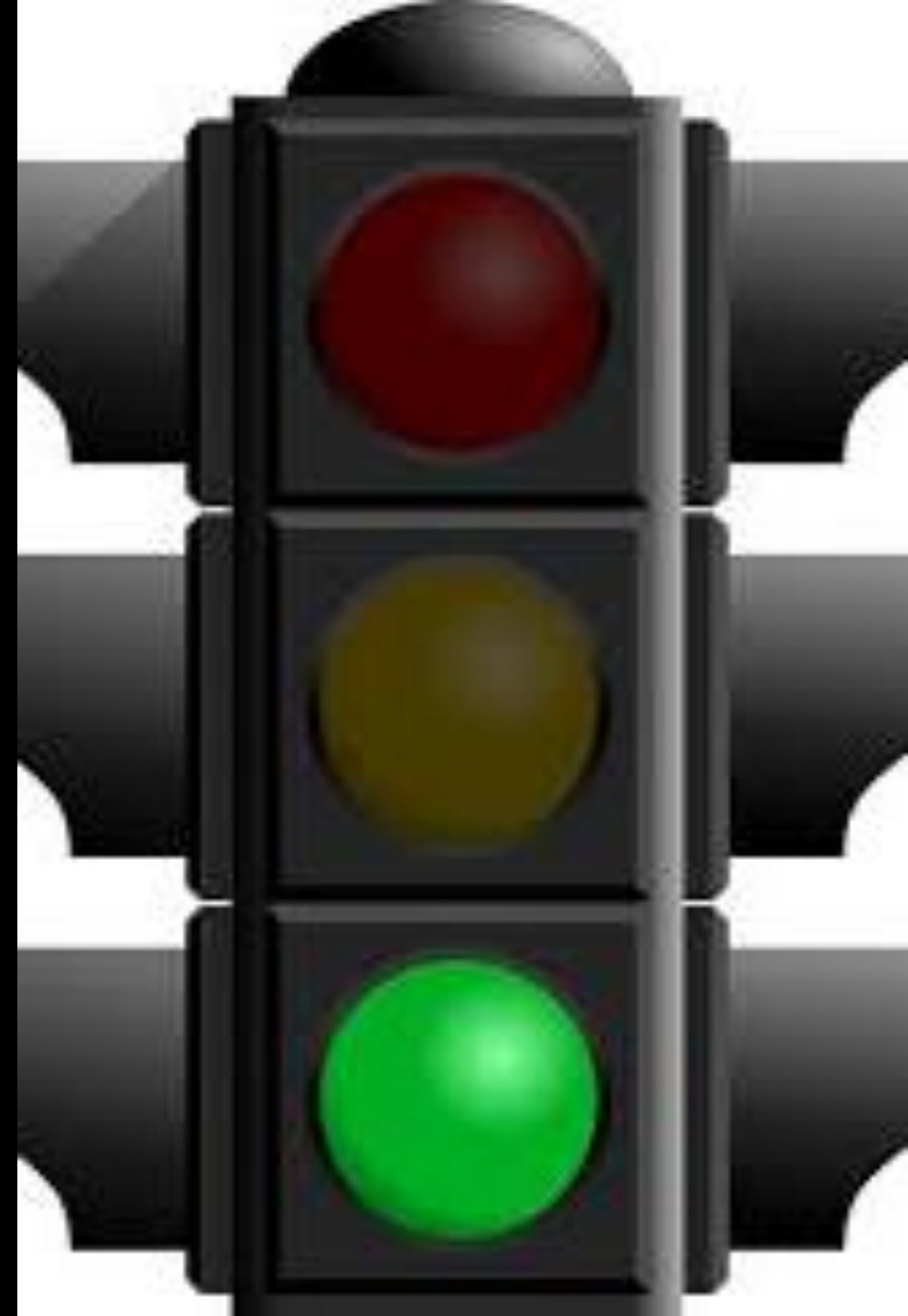
SCHEDULE YOUR APPOINTMENT TO DONATE!
(Must be done at least a day in advance)

The State of
the Blood
Supply

Did You Know?

About 40% of the population can donate, only about 5% actually do.

- **The Blood Center** supplies Southeastern Louisiana and the Mississippi Gulf Coast www.thebloodcenter.org
- Current inventory levels are at a three day supply and adequate to meet **current** patient demands and any potential short term surge in usage.
- Current blood collections are keeping pace with demand – based on **current** trends – *but this must be replenished daily as it is the blood on the shelf that saves a life*



Ask yourself if you're feeling healthy... Good! continue on.

- **Schedule a blood donation**. Blood already on the shelves saves lives, and maintaining a sufficient blood supply is essential to ensure patients in need receive optimal treatment.
- **Begin the health screening** via [FastLane](#) *on the day of your donation* BEFORE you enter a donor center or mobile blood drive
- **Eat a good meal and don't forget your ID**
- **Arrive as close to your appointment time as possible** to reduce your wait and follow the [social distancing measures](#) suggested by the CDC
- After your donation, **consider sharing with friends and family** what you did on social media. It's good, positive, and you may encourage someone else into donating

The Blood Center would like to emphasize that sanitation, cleanliness, and safety for our donors, patients, and staff has always been #1. Every day, as a part of our regular operations, our donor centers follow appropriate infection control standards put forth by the U.S. Food and Drug Administration (FDA)



SELF-CARE RESOURCES

Provided by the Tulane University School of Social Work

Web site going live: April 2, 2020

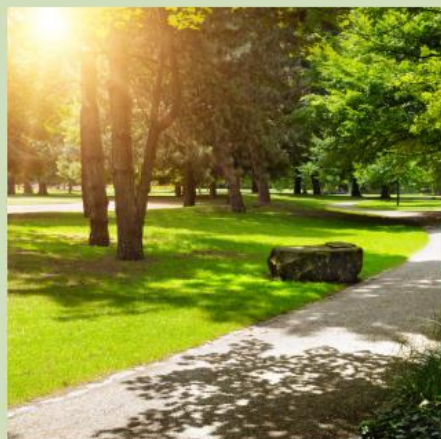
Updated content weekly
Subscribe for updates



MEDITATE

Take a mental break and sit quietly for a few moments.

GUIDED MEDITATION
VIDEOS



GET MOVING

Walk around the block. Go for a bike ride. Take an online yoga class.

SUGGESTED ACTIVITIES



CONNECT

Spend 10 minutes on the phone with a close friend. Video chat with a relative.

WAYS TO BE SOCIAL
WHILE DISTANCED



INDULGE

Watch a movie or TV show. Create art. Play a video game.

ARTS & ENTERTAINMENT
RECOMMENDATIONS