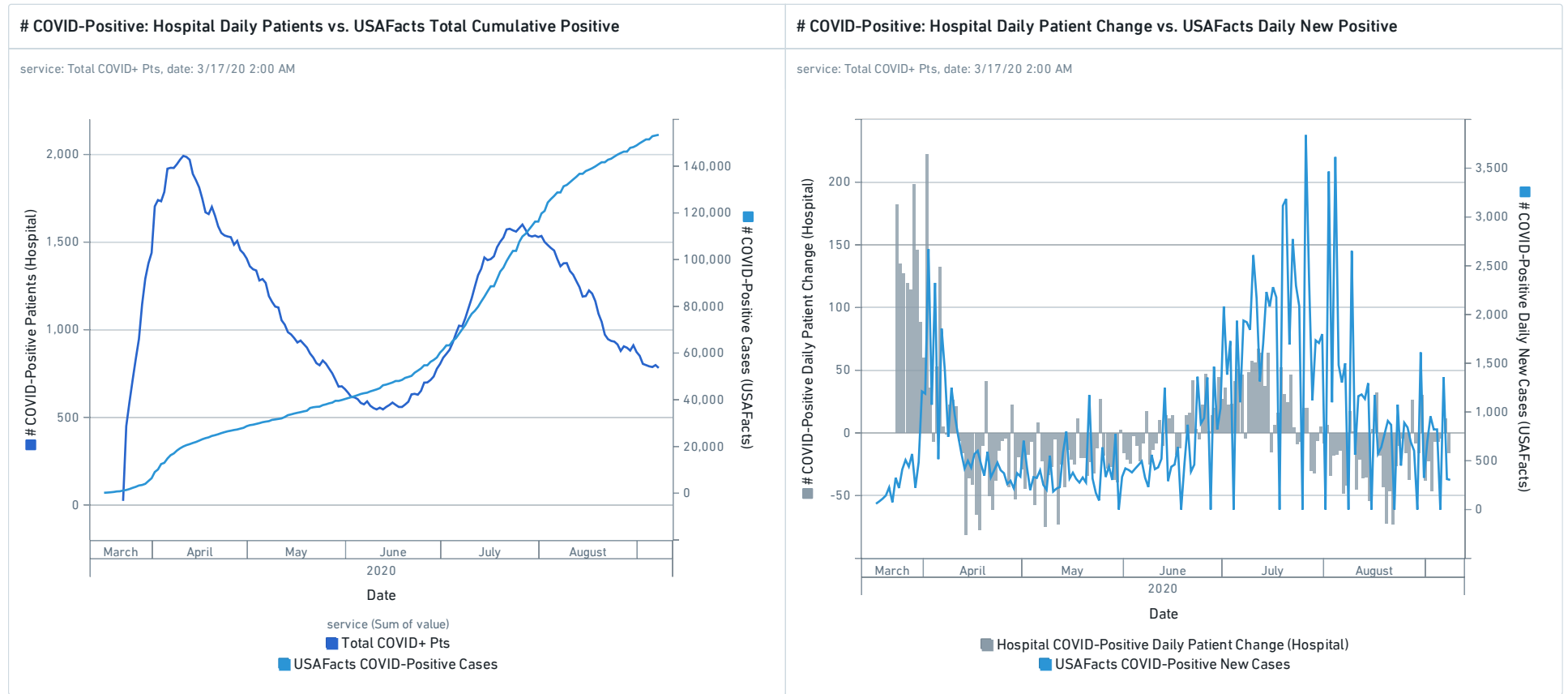


Tulane Case Review Report

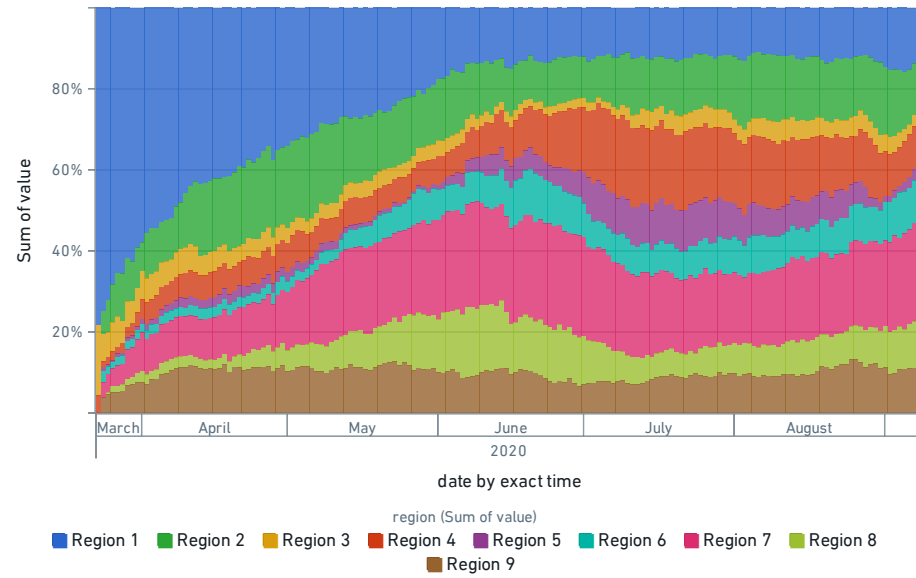


The above chart reviews in daily total volume of hospital COVID-POSITIVE patients against the broader publicly reported cases for the state. It's worth noting here that this is a comparison of ongoing hospitalizations against cumulative cases, not cumulative hospitalizations since that data is currently unavailable. Please note that there are two separate Y-axis.

Zooming in further, this chart looks at just the daily difference in COVID-POSITIVE patients in hospitals against the daily difference in total reported cases. Please note that there are two separate Y-axis.

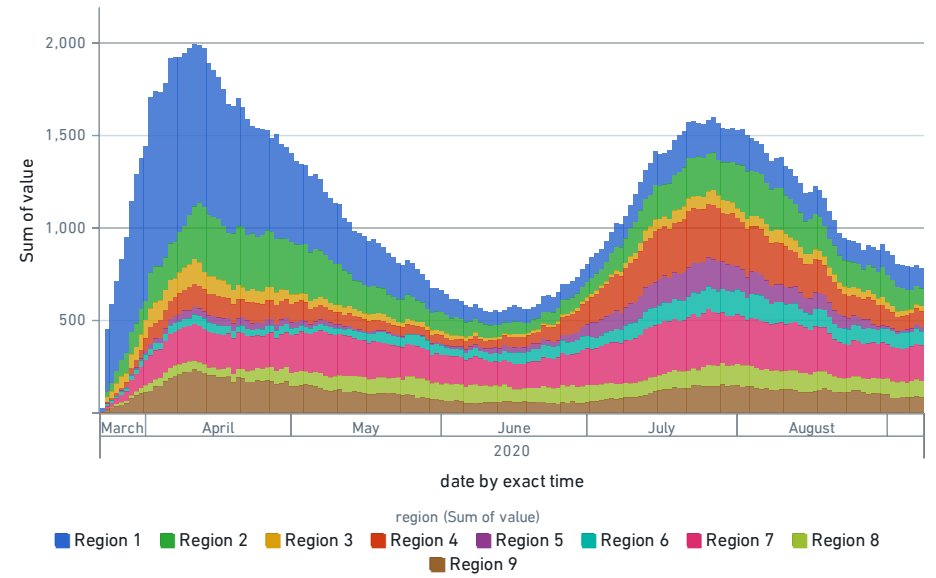
COVID-Positive Hospitalizations by Region (%)

service: Total COVID+ Pts, date: 3/17/20 2:00 AM



COVID-Positive Hospitalizations by Region (Absolute)

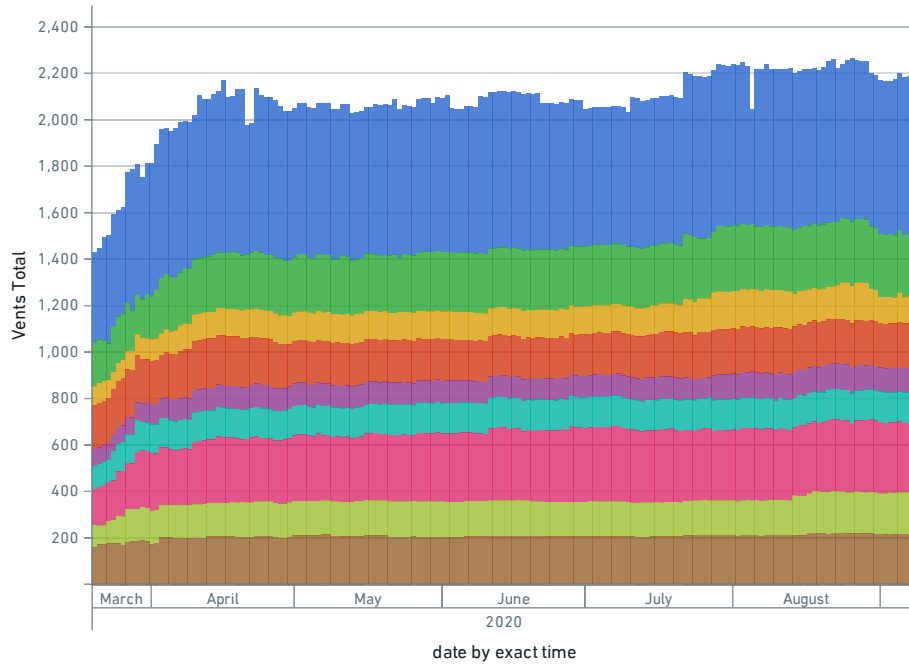
service: Total COVID+ Pts, date: 3/17/20 2:00 AM



The above chart is the same underlying data for total COVID-Positive hospitalizations, but by absolute values.

Vents Total by Region

date: 3/17/20 2:00 AM

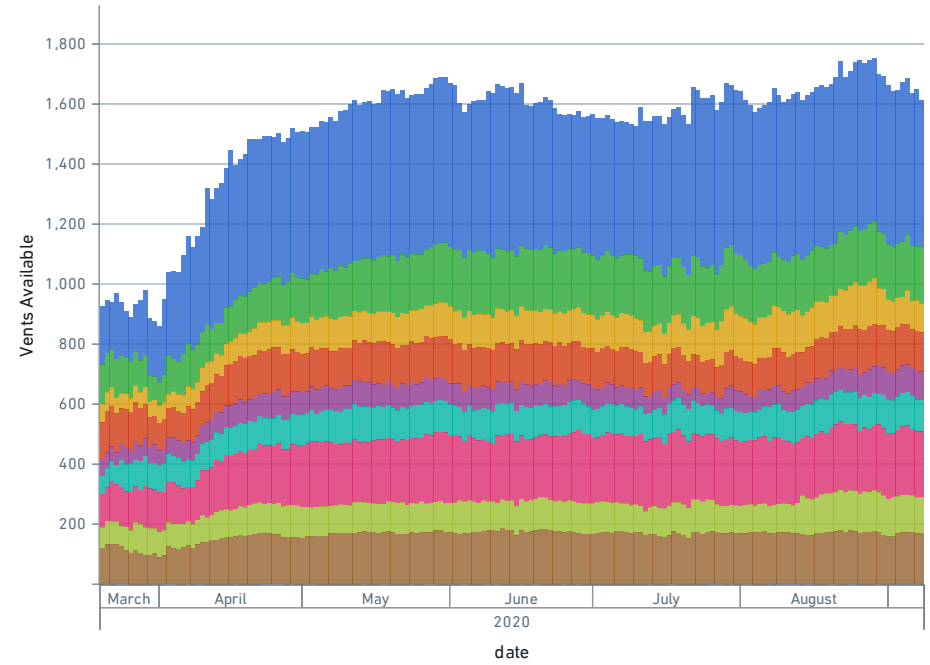


region (Sum of value)

- Region 1
- Region 2
- Region 3
- Region 4
- Region 5
- Region 6
- Region 7
- Region 8
- Region 9

Vents Available by Region

date: 3/17/20 2:00 AM

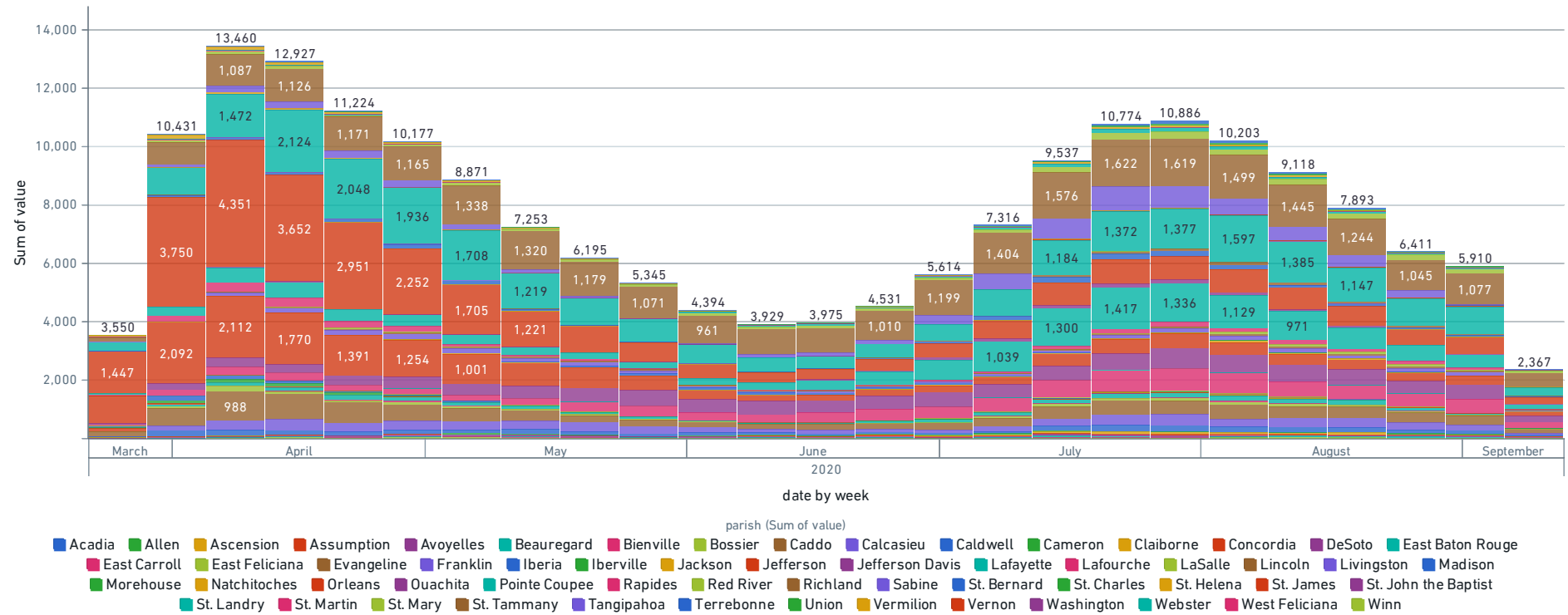


region (Sum of value)

- Region 1
- Region 2
- Region 3
- Region 4
- Region 5
- Region 6
- Region 7
- Region 8
- Region 9

COVID-Positive Daily New Hospitalizations By Parish

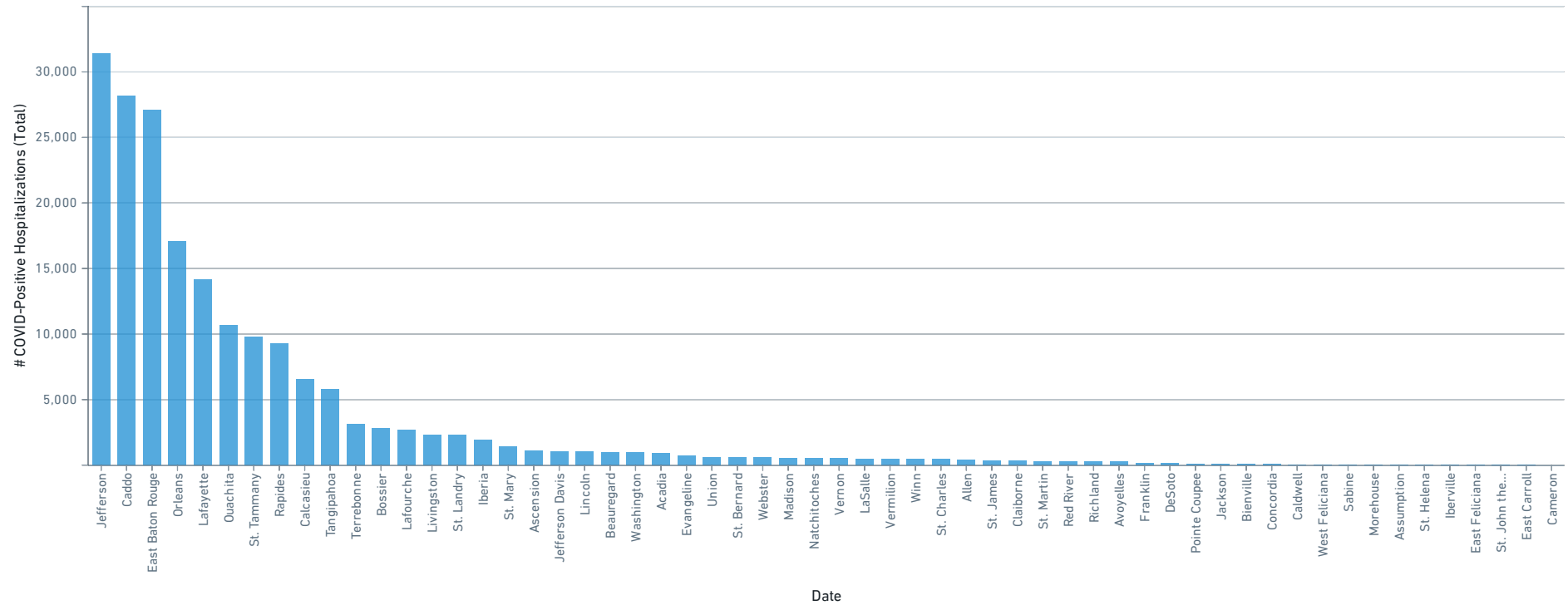
date: 3/17/20 2:00 AM



The above chart provides the daily New Hospitalizations of COVID-Positive patients by Parish.

COVID-Positive Sum of Daily New Hospitalizations By Parish

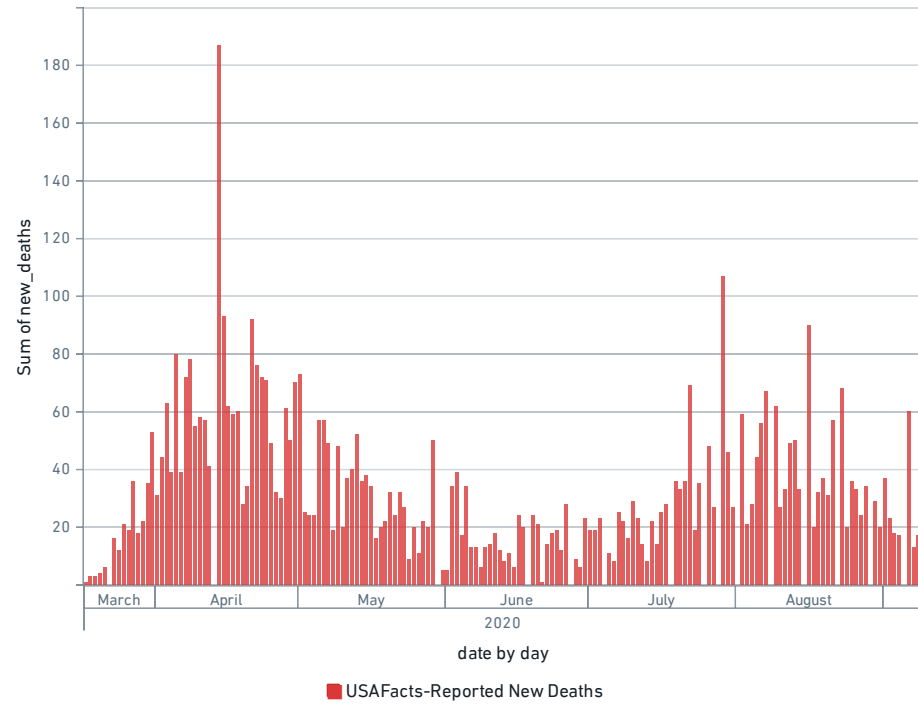
date: 3/17/20 2:00 AM



The above chart sums up the daily New Hospitalizations of COVID-Positive patients by Parish. Please note that these do not include some initial number of COVID-positive patients from prior to when each facility began reporting data.

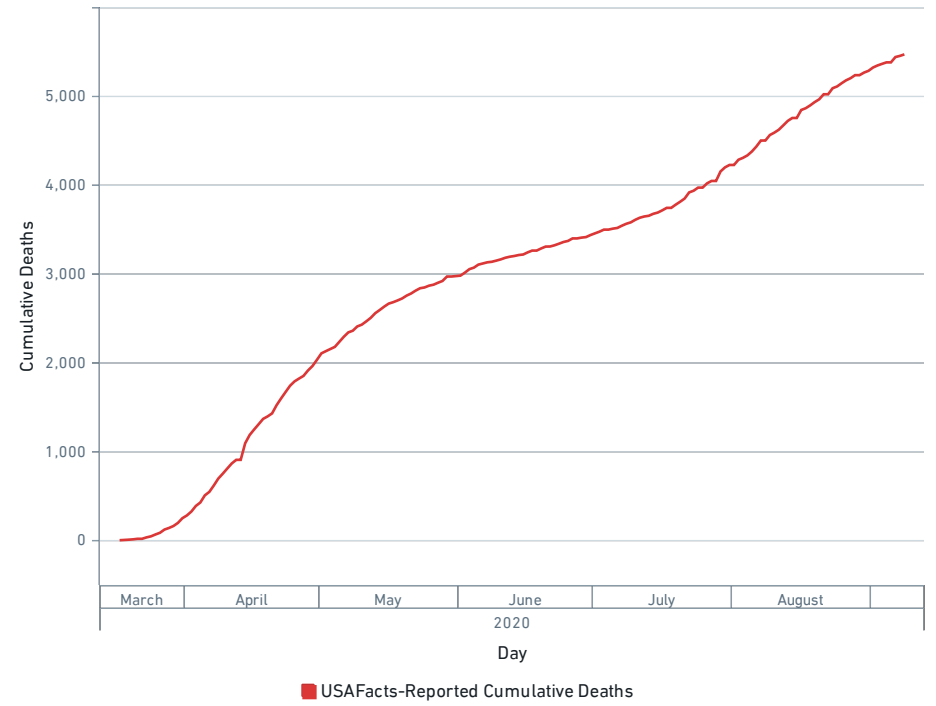
COVID-Related Daily Fatalities: USAFacts

date: 3/17/20 2:00 AM



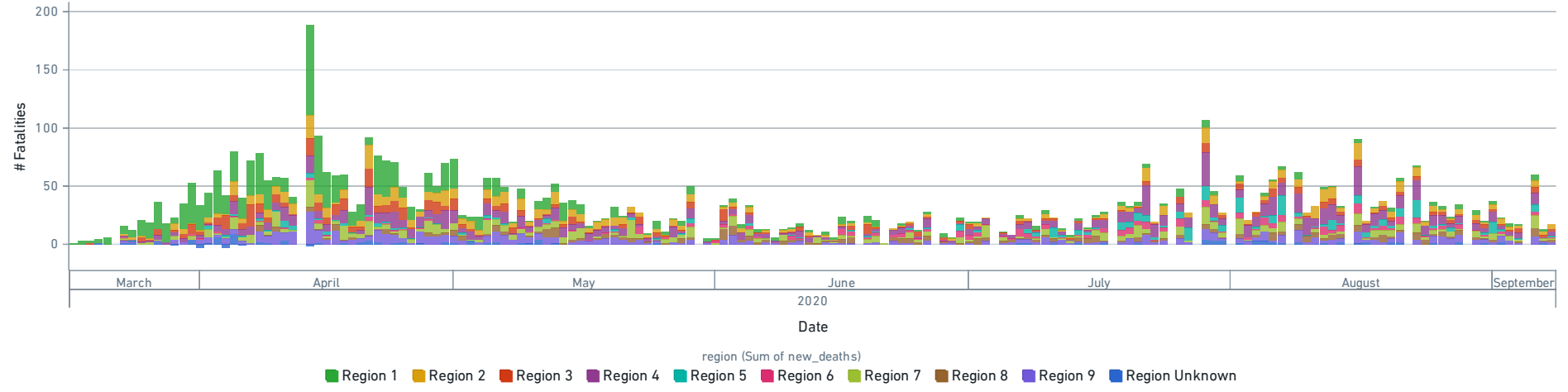
COVID-Related Cumulative Fatalities: USAFacts

date: 3/17/20 2:00 AM



USAFacts-Reported COVID Fatalities by Region

date: 3/17/20 2:00 AM



The above chart shows the count of deaths as provided by USAFacts broken down by region.