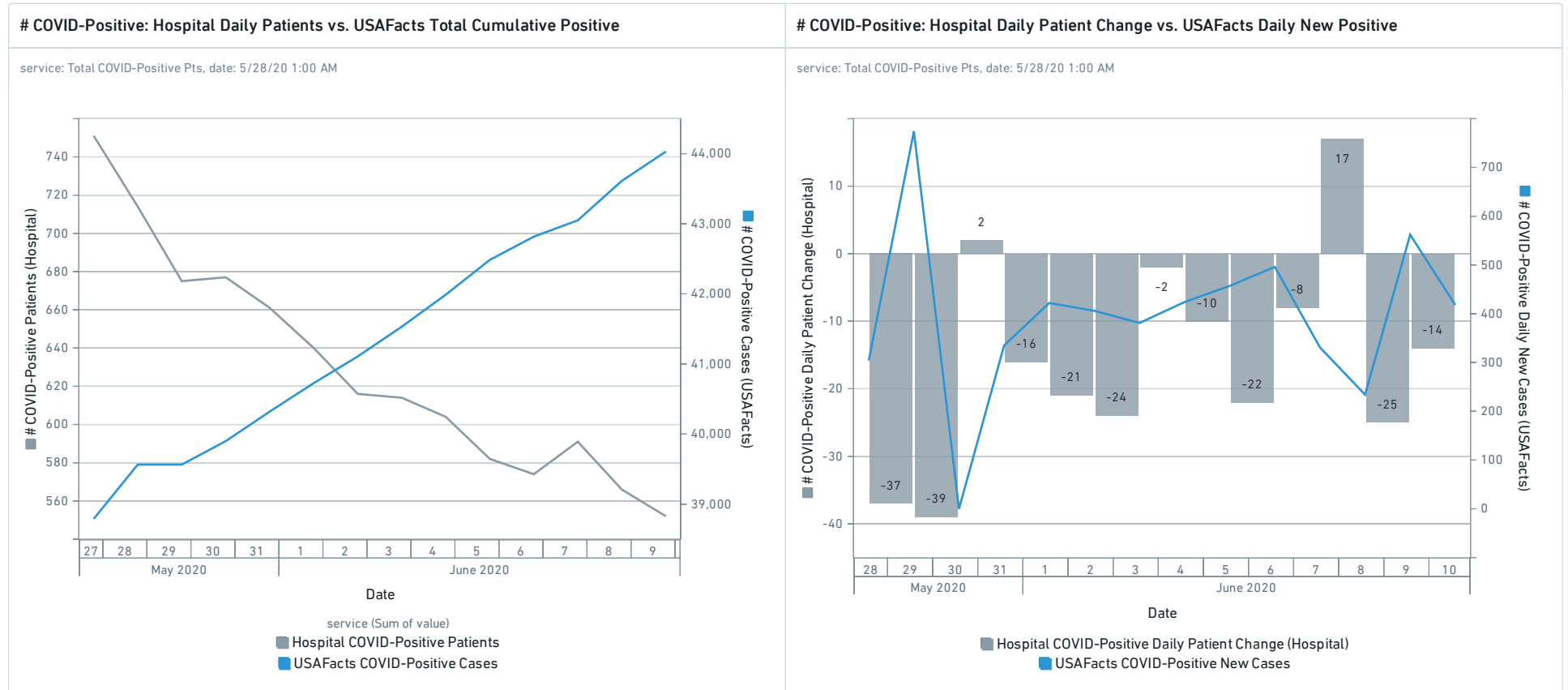


# Tulane Case Review Report

## I. Review of Total COVID-Positive: Comparing Hospital-reported patient figures against USAFacts total figures

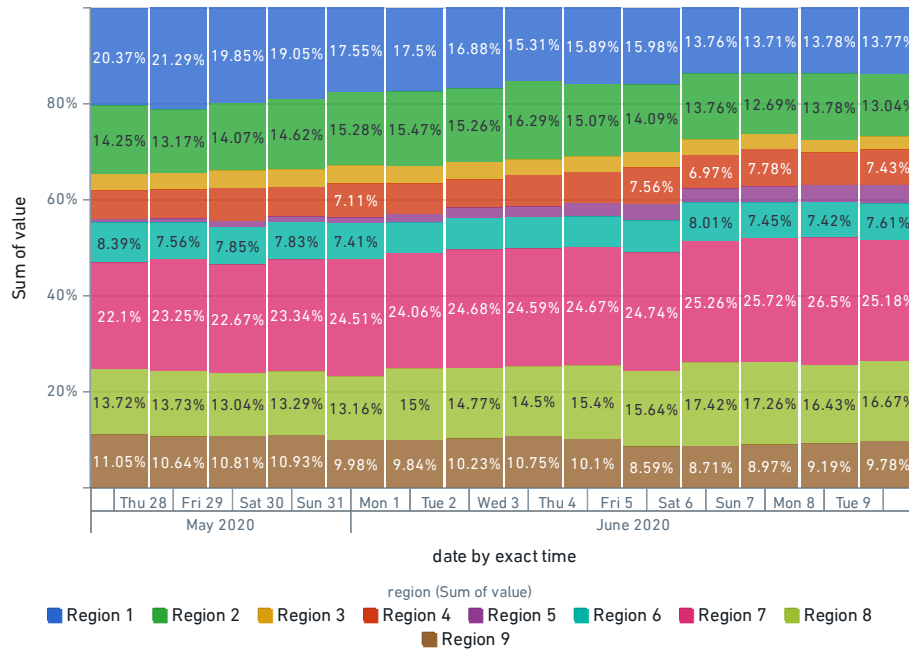


The above chart reviews in daily total volume of hospital COVID-POSITIVE patients against the broader publicly reported cases for the state. It's worth noting here that this is a comparison of ongoing hospitalizations against cumulative cases, not cumulative hospitalizations since that data is currently unavailable. Please note that there are two separate Y-axis.

Zooming in further, this chart looks at just the daily difference in COVID-POSITIVE patients in hospitals against the daily difference in total reported cases. Please note that there are two separate Y-axis.

### COVID-Positive Hospitalizations by Region (%)

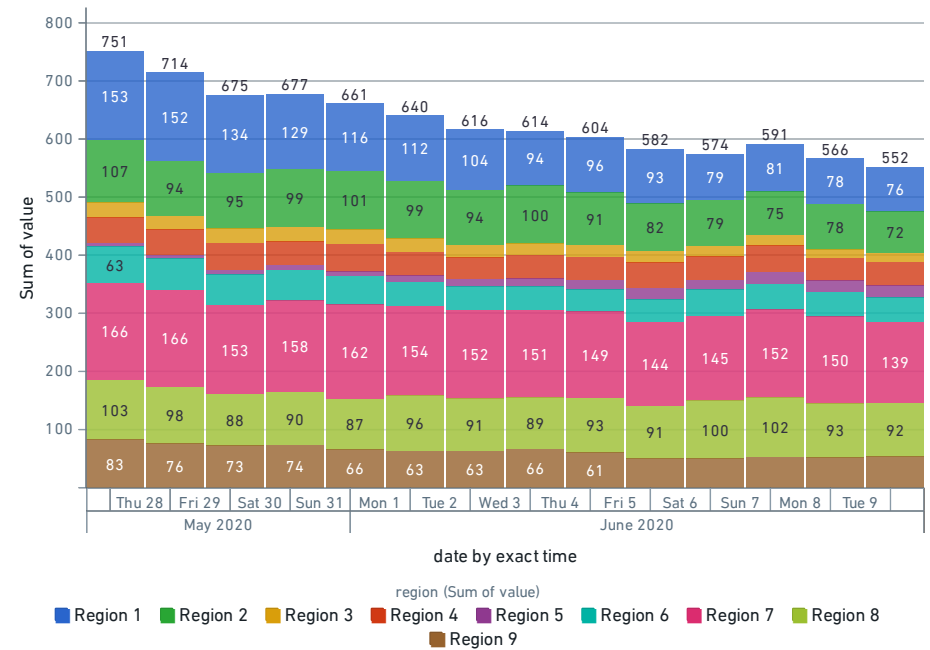
service: Total COVID-Positive Pts, date: 5/28/20 1:00 AM



Over time, the total % of all COVID-Positive hospitalizations shifted from primarily in Region 1, to just 30% in Region 1.

### COVID-Positive Hospitalizations by Region (Absolute)

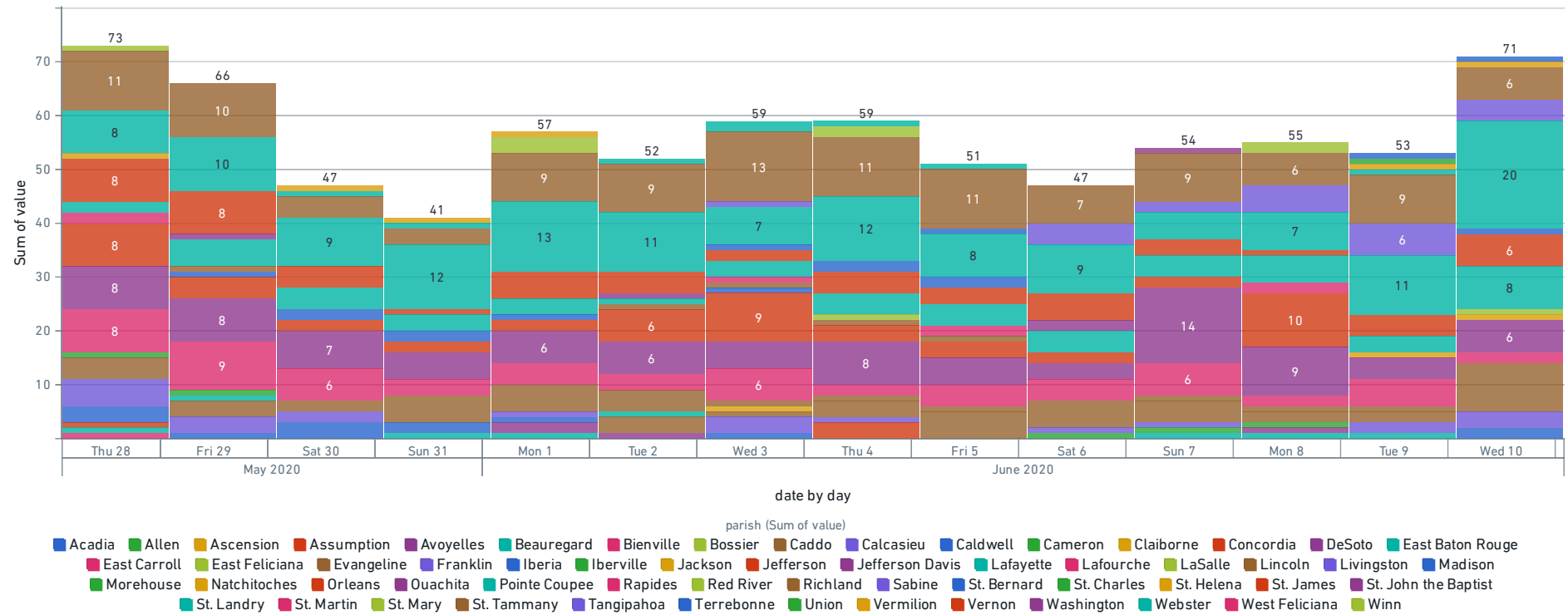
service: Total COVID-Positive Pts, date: 5/28/20 1:00 AM



The above chart is the same underlying data for total COVID-Positive hospitalizations, but by absolute values.

# COVID-Positive Daily New Hospitalizations By Parish

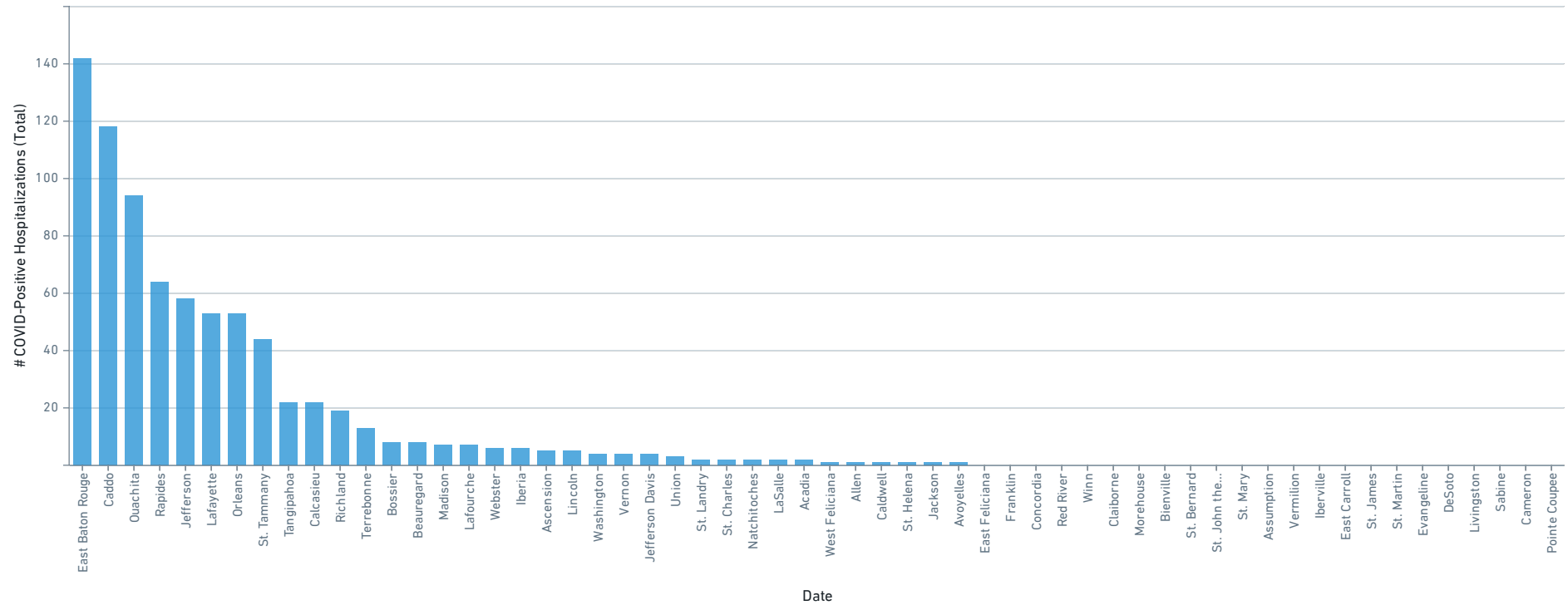
date: 5/28/20 1:00 AM



The above chart provides the daily New Hospitalizations of COVID-Positive patients by Parish.

### COVID-Positive Sum of Daily New Hospitalizations By Parish

date: 5/28/20 1:00 AM

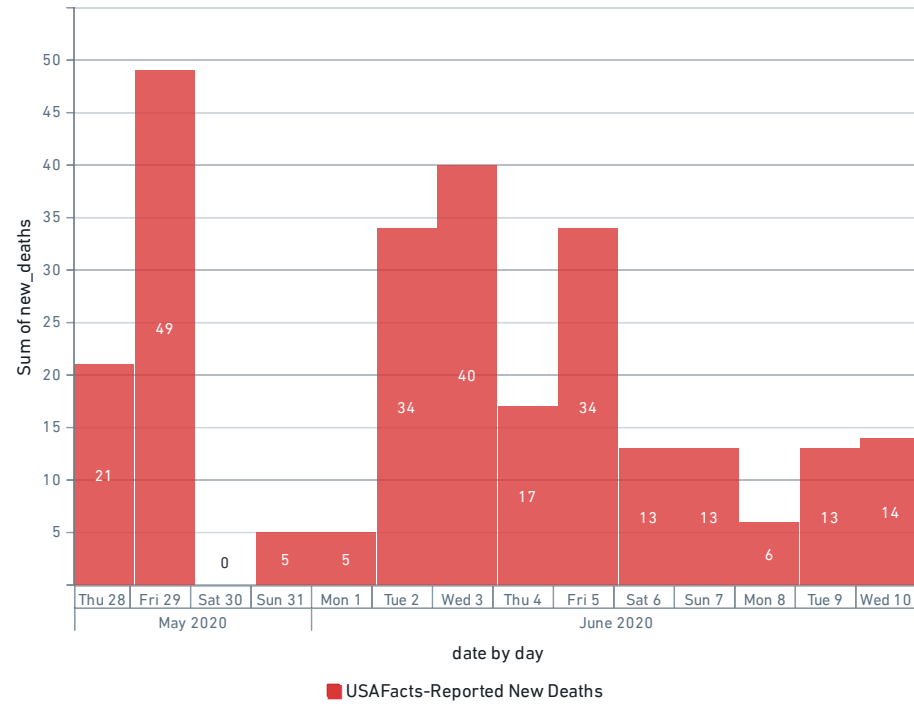


The above chart sums up the daily New Hospitalizations of COVID-Positive patients by Parish. Please note that these do not include some initial number of COVID-positive patients from prior to when each facility began reporting data.

### II. Review of Total COVID Fatalities: Comparing Hospital-reported patient fatalities against USAFacts total fatalities

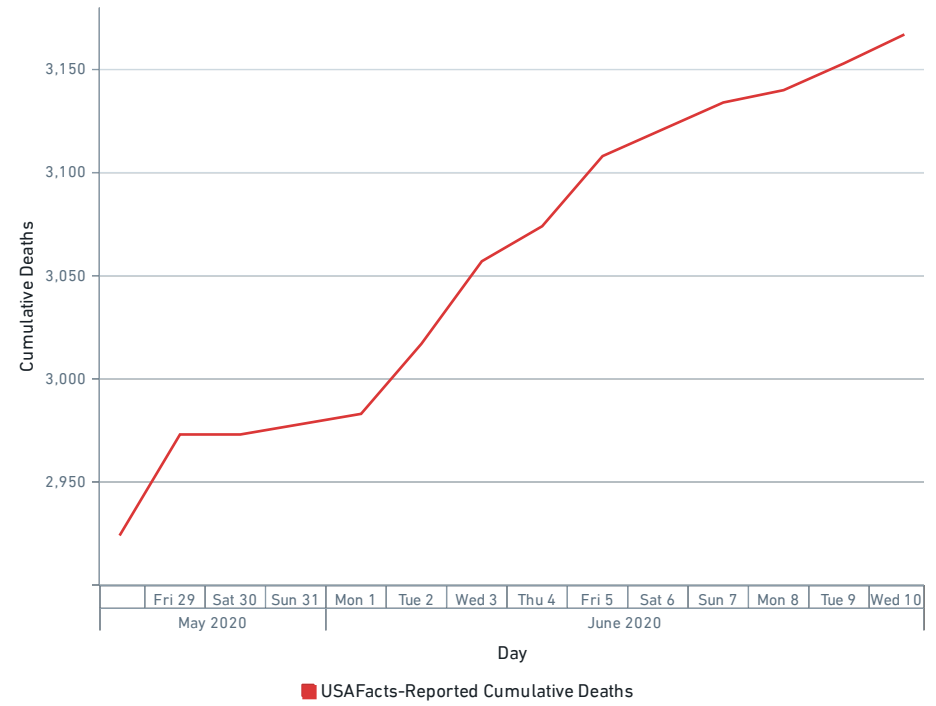
COVID-Related Daily Fatalities: USAFacts

date: 5/28/20 1:00 AM



COVID-Related Cumulative Fatalities: USAFacts

date: 5/28/20 1:00 AM



# USAFacts-Reported COVID Fatalities by Region

date: 5/28/20 1:00 AM



The above chart shows the count of deaths as provided by USAFacts broken down by region.