
INSIDE TulaneMed

October 3, 2022

News

1. [Embers, McLachlan and Morici collaborate to develop new Lyme vaccine with lasting protection](#)
2. [Brandt to present named lecture at American College of Surgeons Clinical Congress](#)
3. [Tulane Women's Services clinic provides care for patients with polycystic ovary syndrome \(PCOS\)](#)
4. [Savoie to be honored at Arthritis Foundation's Bone Bash fundraiser](#)

Tell Us Your News

Events of the Week

Deming Department of Medicine Grand Rounds: *Update on Gene Therapy 2022: a New Orleans Perspective* with Jay Kolls, MD, Professor of Medicine and Pediatrics, John W Deming Endowed Chair in Internal Medicine, Director of Center for Translational Research in Infection and Inflammation, TUSOM. **Wednesday, October 5 at noon.** Hutchinson 7062 or [via Zoom](#). *Refreshments will be served.

Department of Psychiatry and C.A.L.M. present [*In my Mind: A Benefit Bringing Awareness to Psychosis*](#). The event will feature an art exhibit, live music, signature cocktails, and of course, great food and great company! **Friday, October 7 from 6 - 10pm**. Space is limited, so buy your tickets now!

Staff Appreciation Football Game **Saturday, October 8. Tailgate at 9:30am and kickoff at 2:30pm**. Watch the Green Wave take on ECU with tickets starting at just \$5. Enjoy food, drinks, giveaways, and access to the Capital One party deck, all sponsored by TIAA! Please [click here](#) to RSVP and buy tickets for the event.

Submit Your Event

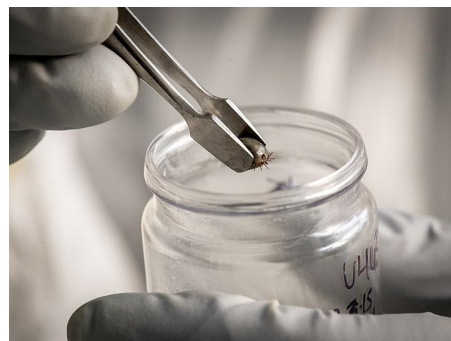
Lagniappe

October is Cybersecurity Awareness Month and Tulane is an official 2022 champion. Connect with Tulane Information Security on campus, through social media, and in email to collect tips and best practices on how to fight cybercriminals. Best of all, **win prizes!** Tulane Information Security will have a weekly booth during October near the Hutchinson cafeteria. [Click here to learn more.](#)

Tulane research collaborate on Lyme vaccine

Researchers at Tulane University recently received \$1.3 million from the National Institutes of Health to find out if the same technology behind a successful Lyme disease vaccine for dogs can be formulated with immune-boosting nanoparticles to offer safe and lasting protection for people.

The study will include an adjuvant developed at Tulane along with a nonhuman primate model of Lyme disease that is only available at the Tulane National Primate Research Center. [Learn more.](#)



Jobs at Tulane SoM

Have a friend looking for a great job? Thinking about opportunities for career advancement? The School of Medicine has many openings in many areas - administrative, financial, research, patient care and more. Here are a few of the positions available this week:

[Medical Research Technician - Department of Pediatrics](#)

[Clinical Protocol Technician - Tulane Cancer Center](#)

[Behavioral Management Technician II - TNPRC](#)

To see more, go to [Jobs at Tulane](#).

RESPECT ETHICAL INTEGRITY COMMUNICATION
ACCOUNTABILITY DRIVE FOR EXCELLENCE

[Manage](#) your preferences | [Opt Out](#) using TrueRemove™
Got this as a forward? [Sign up](#) to receive our future emails.
View this email [online](#).

1430 Tulane Avenue None | New Orleans, LA 70112 US

This email was sent to dpenniso@tulane.edu.
To continue receiving our emails, add us to your address book.