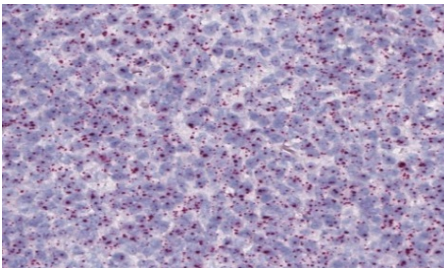


## RNAscope Technology is now at Tulane

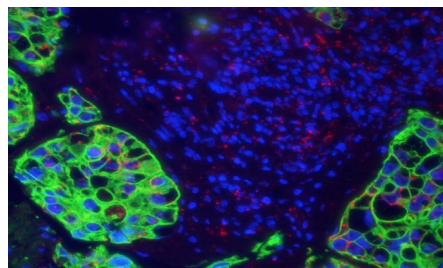
No Specific Antibody to target Found? No Problem.  
Antibody Validation? No Problem.  
Struggling with Bad Antibodies? No Problem.  
1-Day Turnaround Time? No Problem.

- ACD RNAscope design probes for ANY gene in ANY genome for visualization in ANY tissue
- Chromogenic or fluorescent detection of RNA in frozen AND paraffin embedded tissue sections
- Custom target probes developed within 2 weeks
- Capability of dual RNA and protein detection in the same section

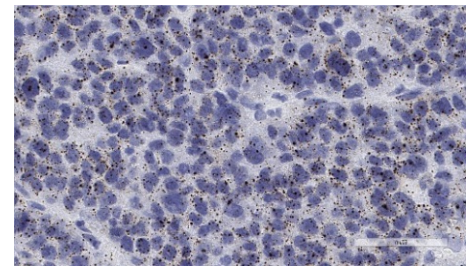
**RNAscope represents a major advance in RNA-ISH procedures with its proprietary probe design to amplify target-specific signals but not background noise from non-specific hybridization.**



Human Tonsil, Red - RNAscope



Detection of RNA and Protein



Human Tonsil, Brown - RNAscope

For consultation and performance of the *in situ* assay contact TU Stem Cell Research & Regenerative Medicine Histology Core Lab via email: [cscrm.histology@wave.tulane.edu](mailto:cscrm.histology@wave.tulane.edu)

For information on the RNAscope probe library and kit, contact: <https://acdbio.com/catalog-probes>