

DAILY REPORTS
18 APRIL 2020

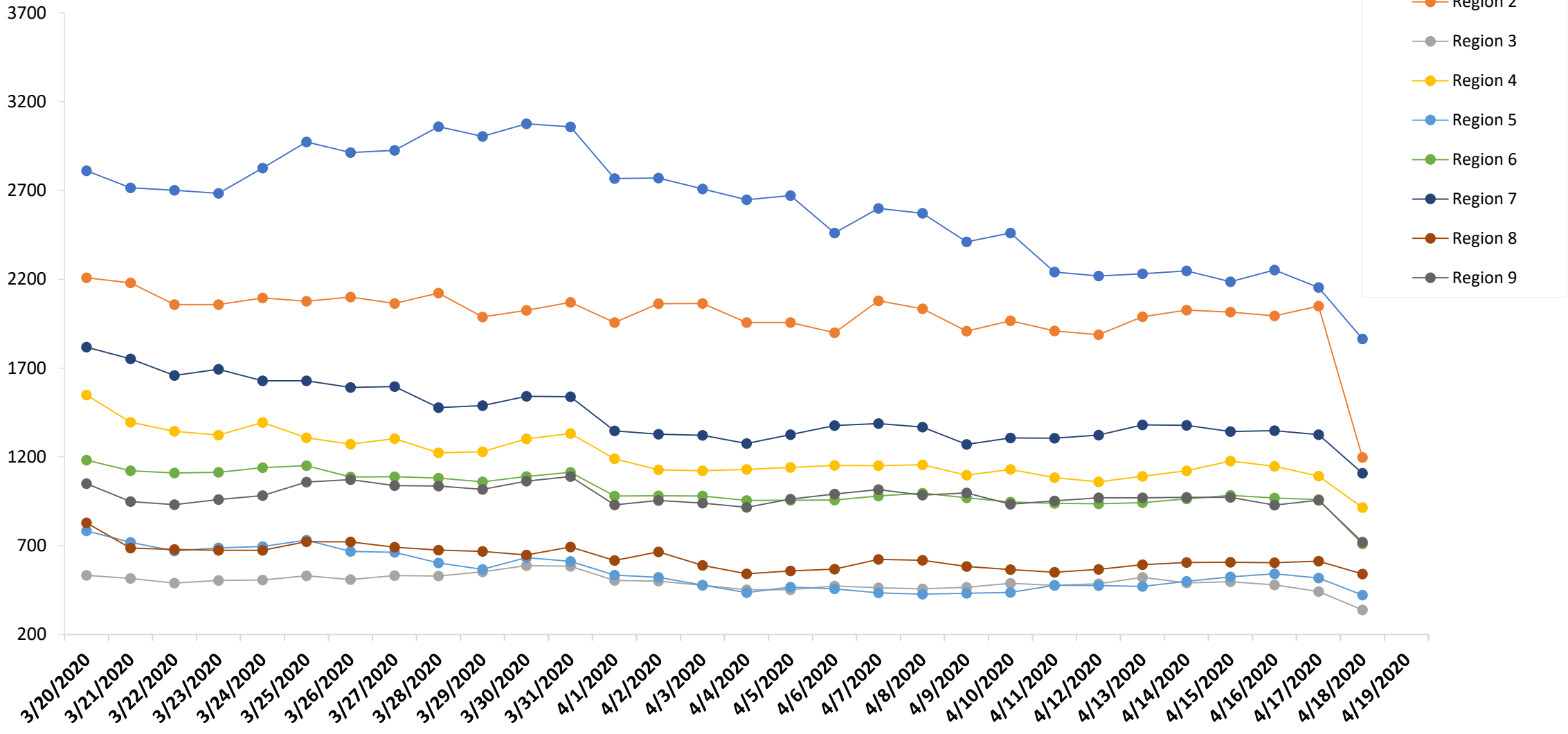


LOUISIANA
EMERGENCY RESPONSE NETWORK

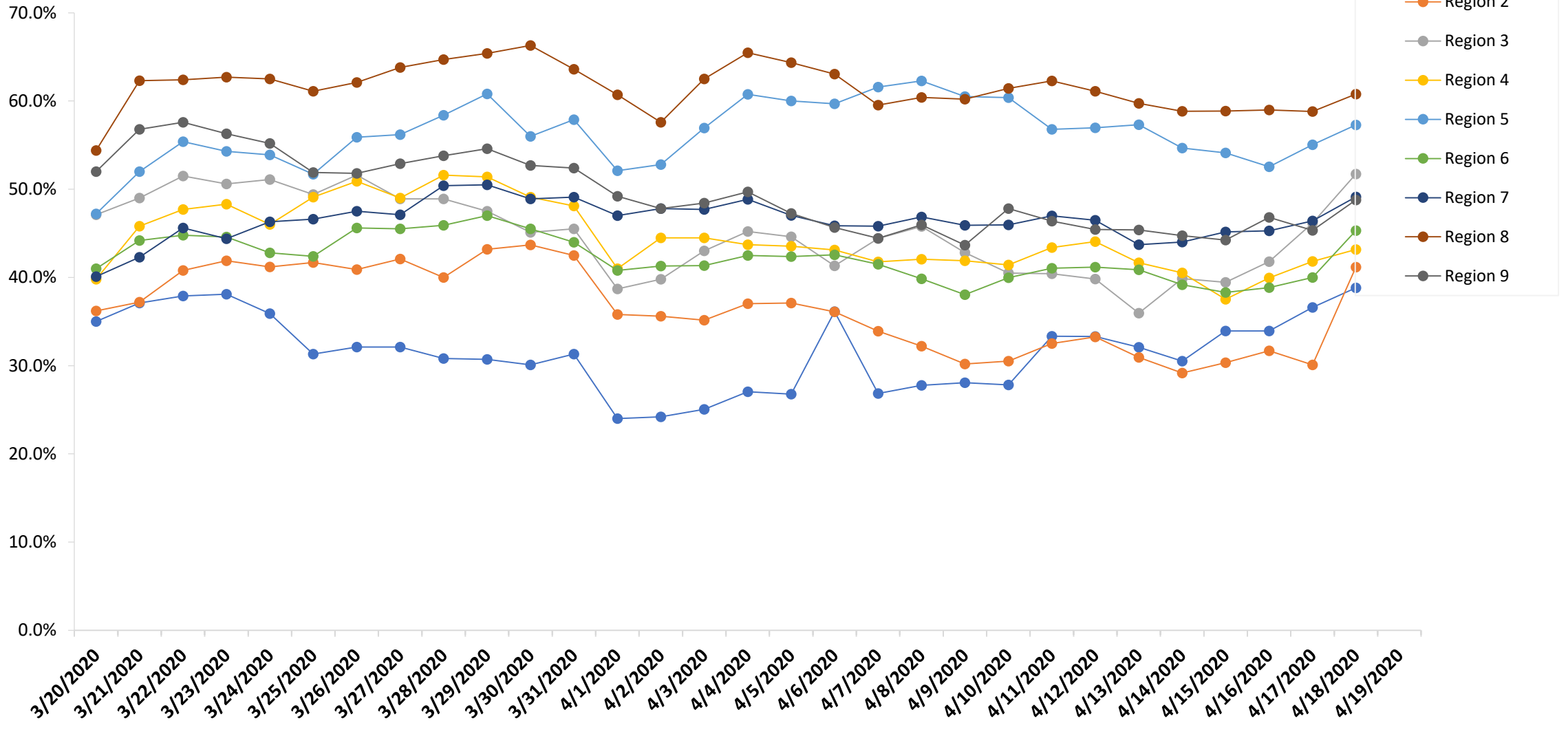


Utilization of Total Beds in Louisiana Hospitals

Current Census



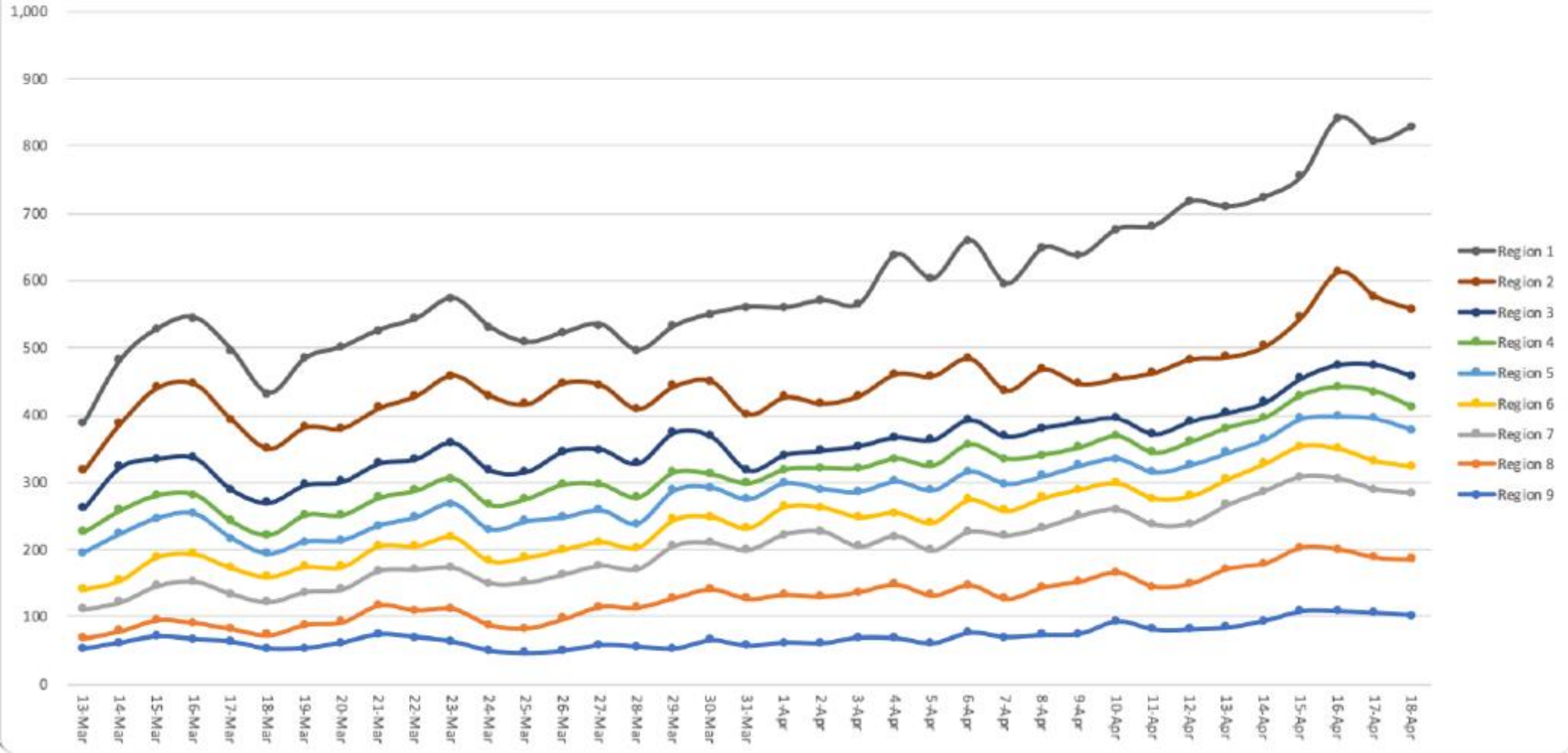
Available Capacity



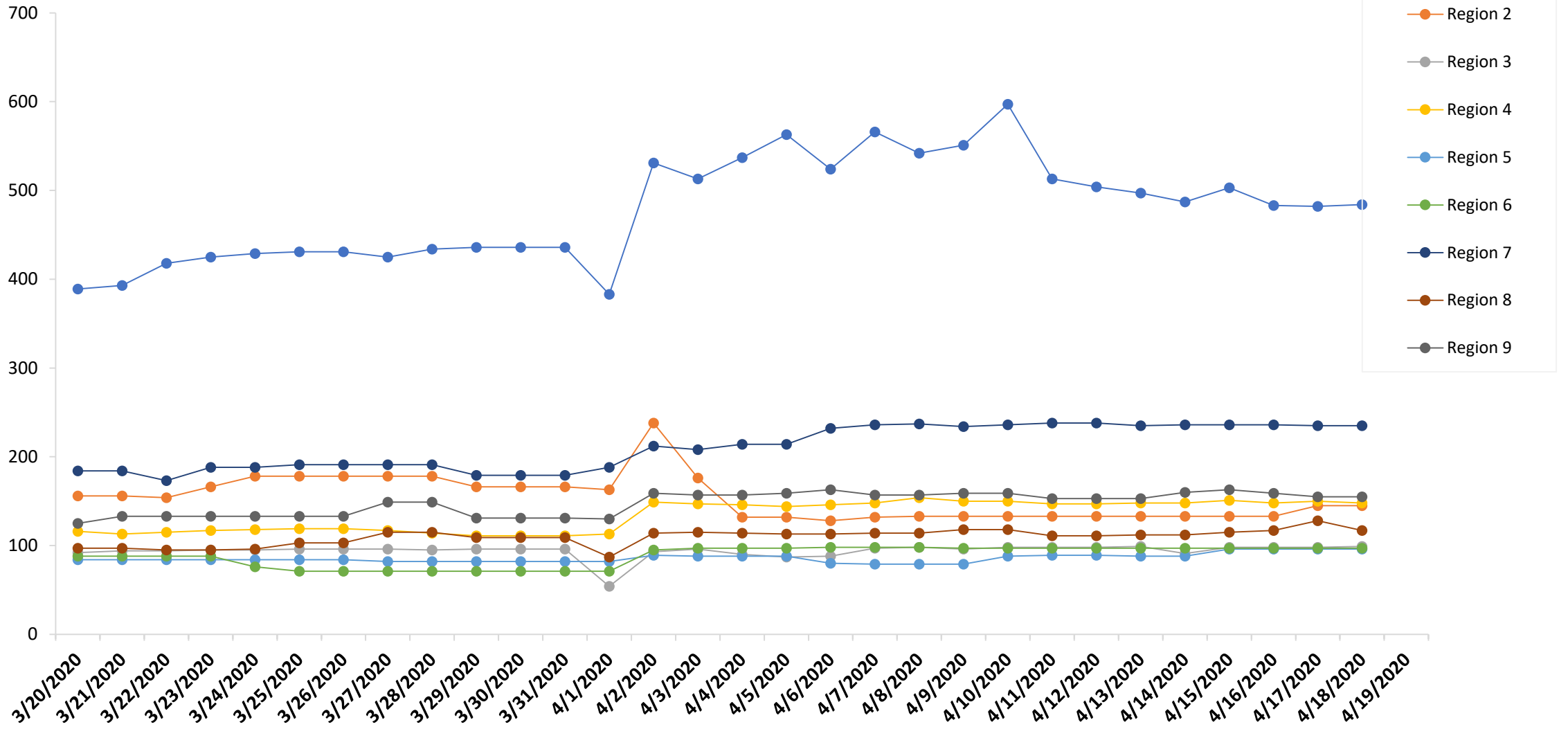


ICU Bed Utilization by Region

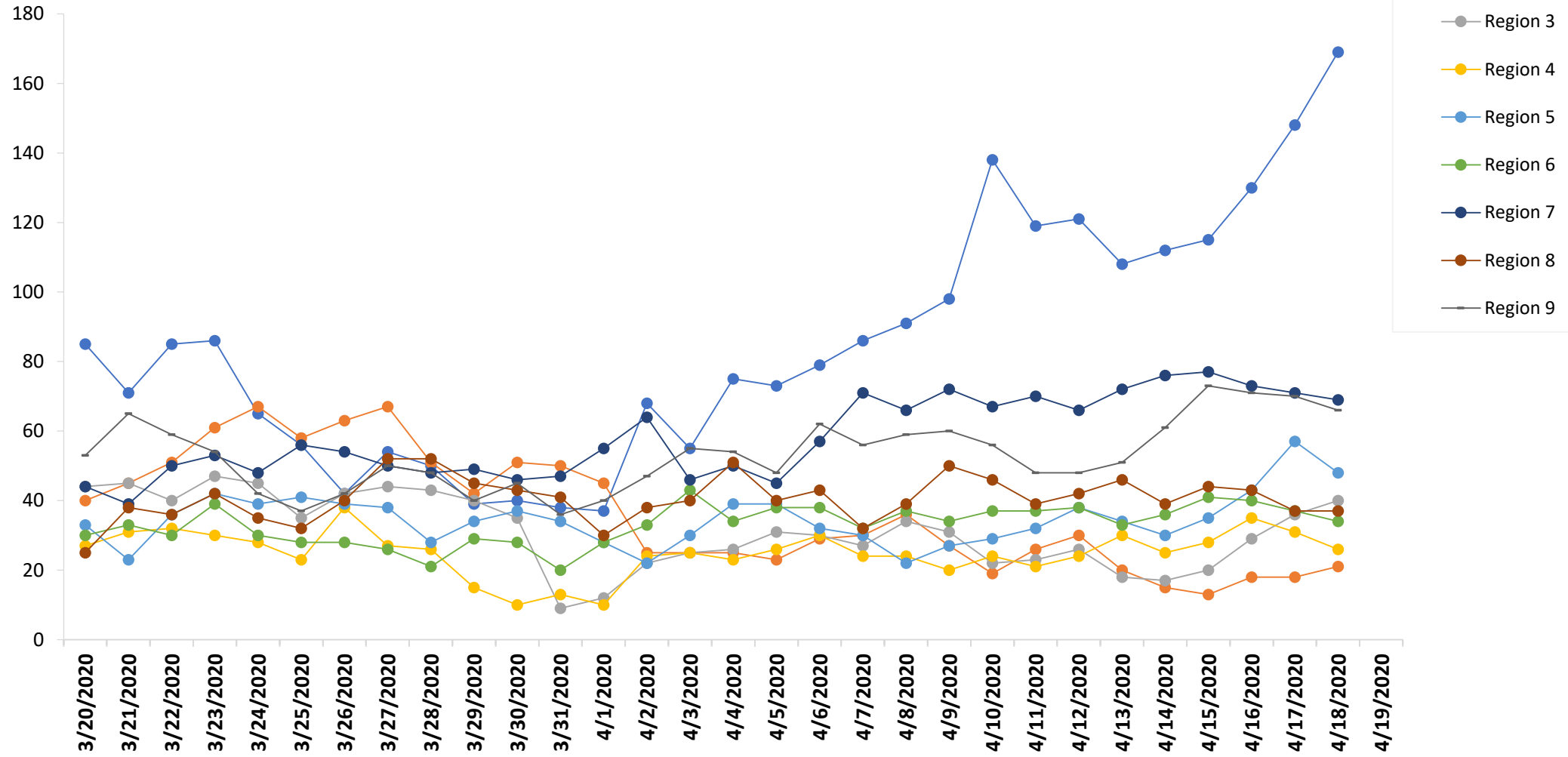
Daily Trends in ICU Bed Availability
(ICU Neo-Nate Bed Types Excluded)



Critical Care - Adult - Capacity

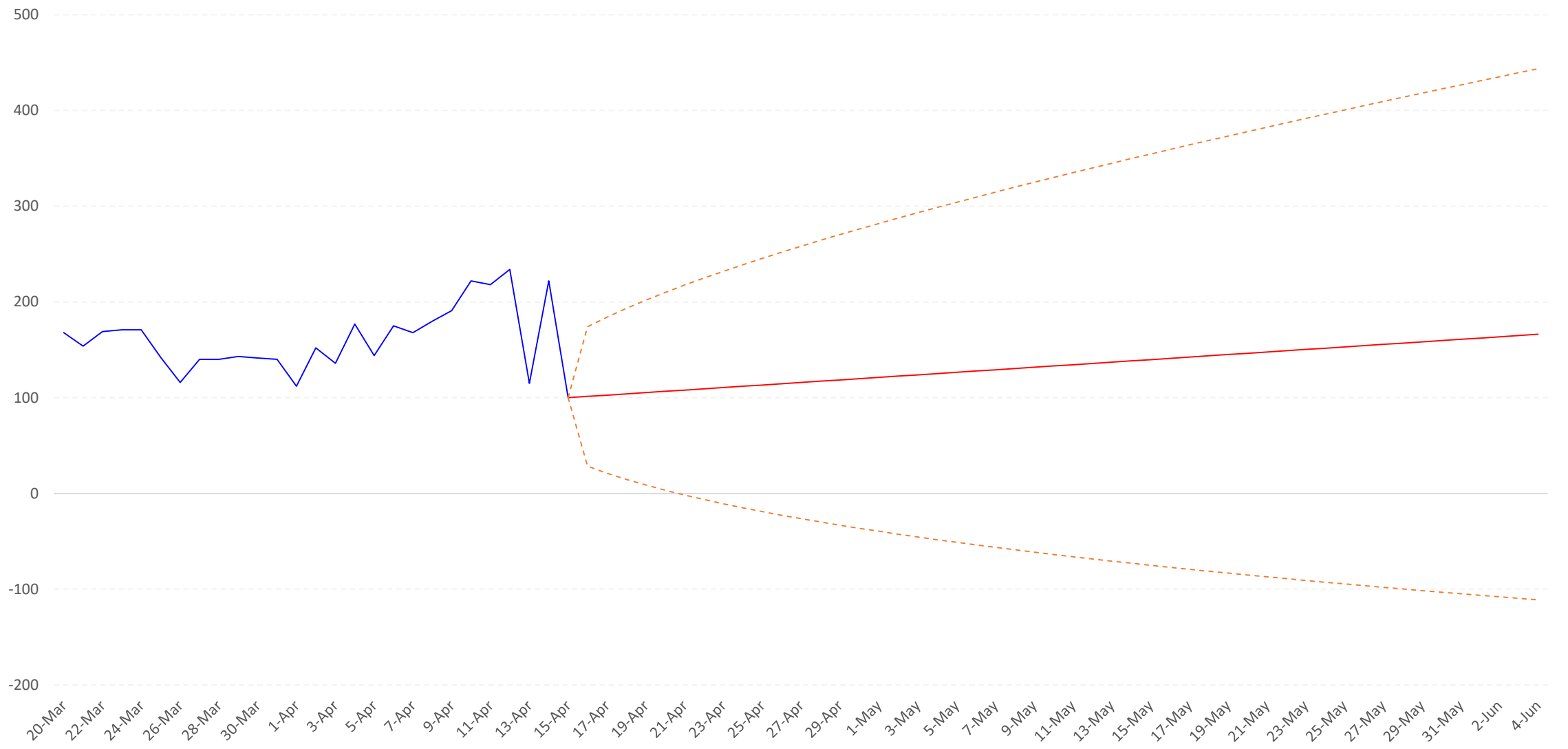


Critical Care - Adult - Available beds

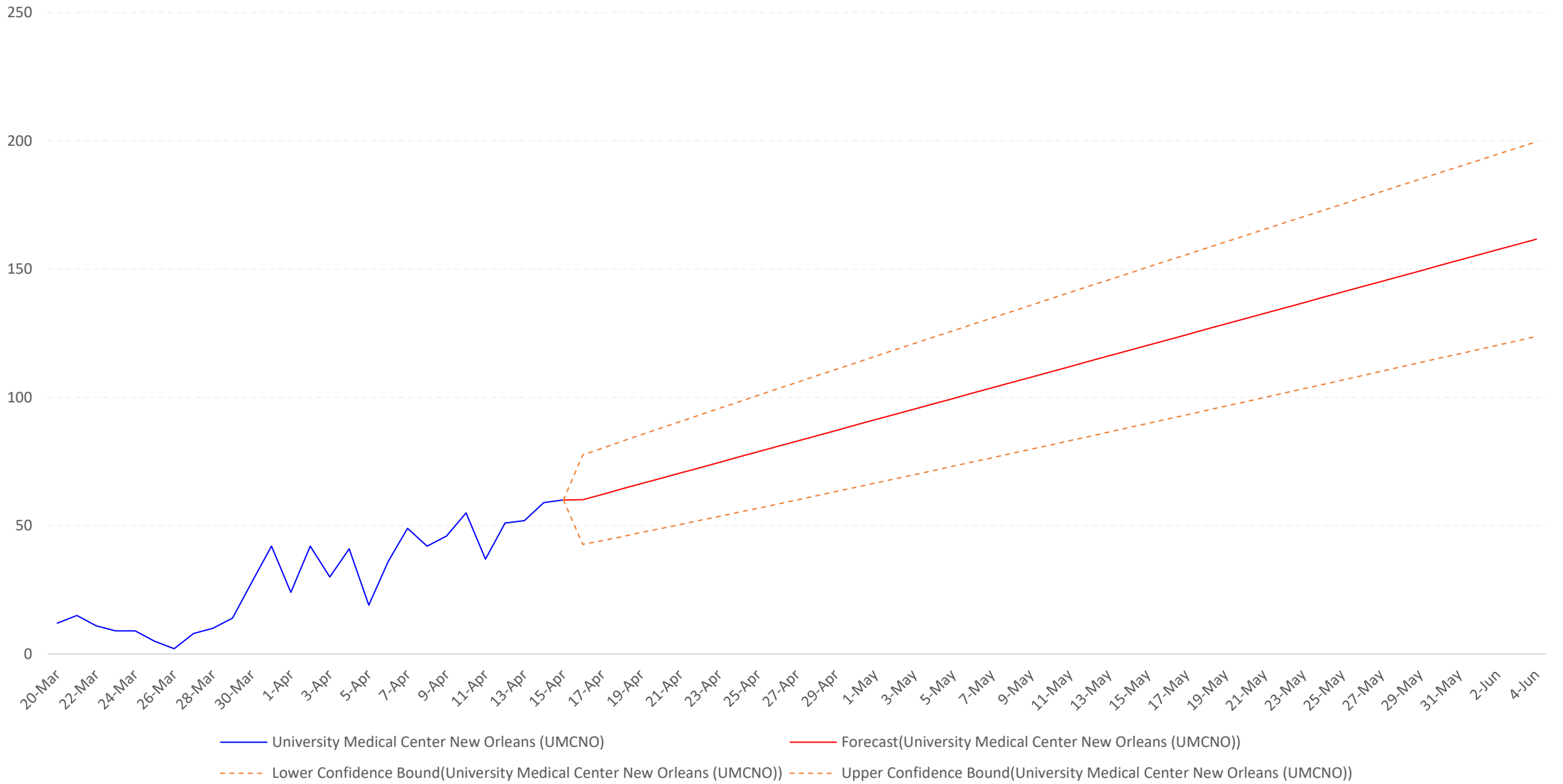


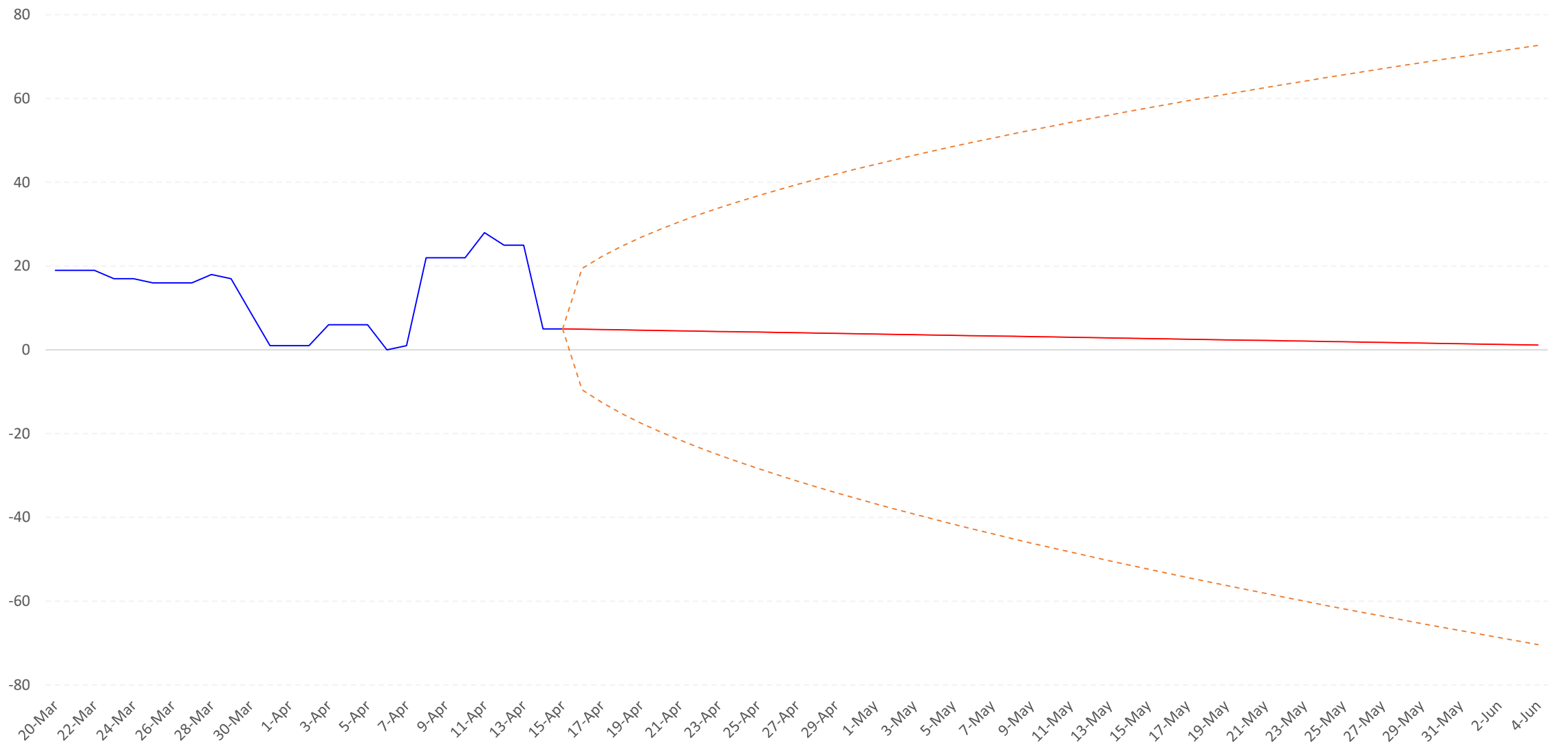


Predicted ICU bed full
saturation

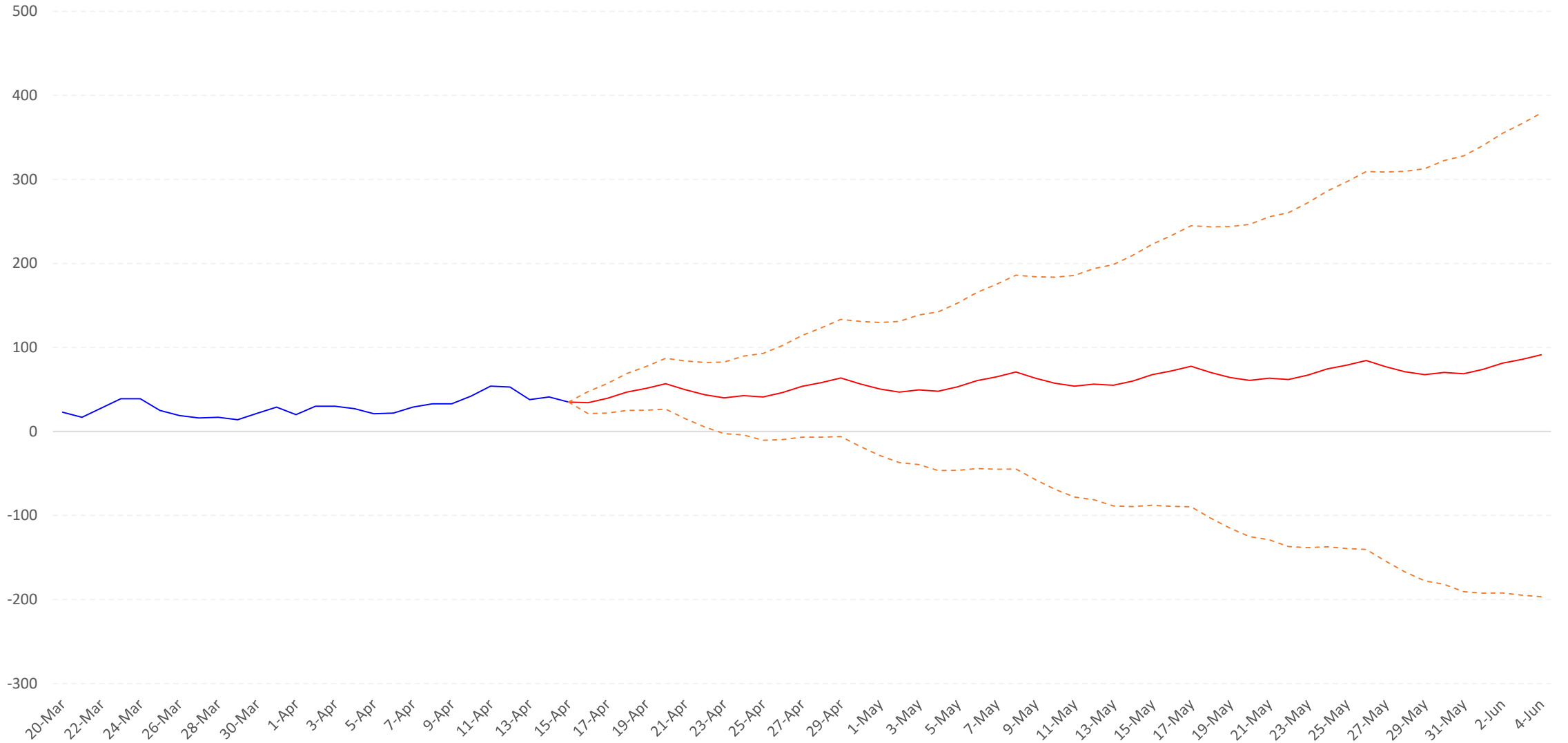


— Grand Total — Forecast(Grand Total) - - - Lower Confidence Bound(Grand Total) - - - Upper Confidence Bound(Grand Total)





— Tulane Medical Center
 — Forecast(Tulane Medical Center)
 - - - Lower Confidence Bound(Tulane Medical Center)
 - - - Upper Confidence Bound(Tulane Medical Center)



— Ochsner Medical Center
 — Forecast(Ochsner Medical Center)
 - - - Lower Confidence Bound(Ochsner Medical Center)
 - - - Upper Confidence Bound(Ochsner Medical Center)



**Preliminary Hospitalized
COVID-19 Patient Data**

Daily Percentages of COVID-Positive and COVID-Pending on Ventilators

Date
3/22/2020 to 4/18/2020

Tier
All
Region
All

Facility
All

Last Updated
4/18/2020 6:15:37 AM

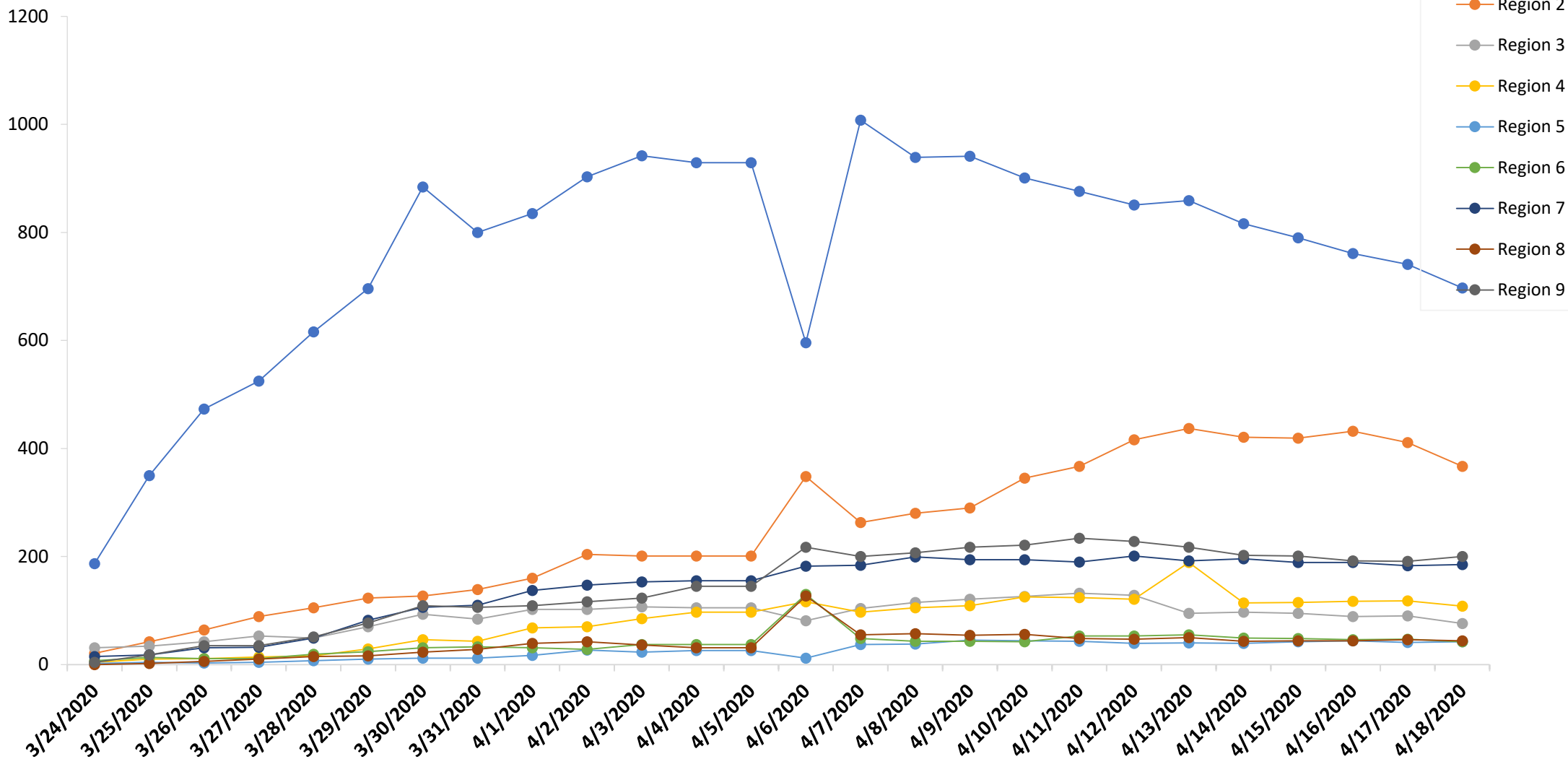
Covid-19 Data - Percent of Positive on Vents - History



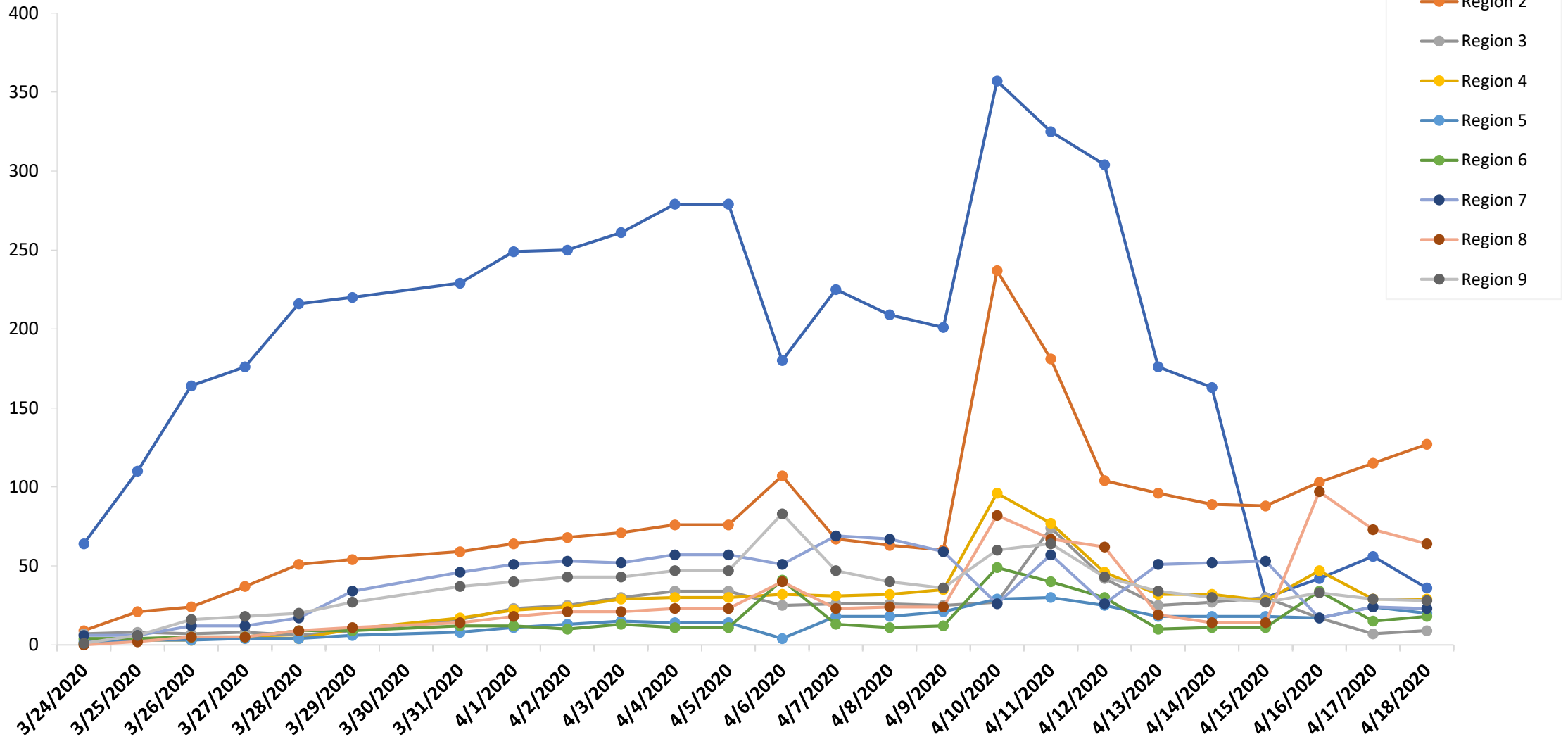
Covid-19 Data - Percent of Pending on Vents - History



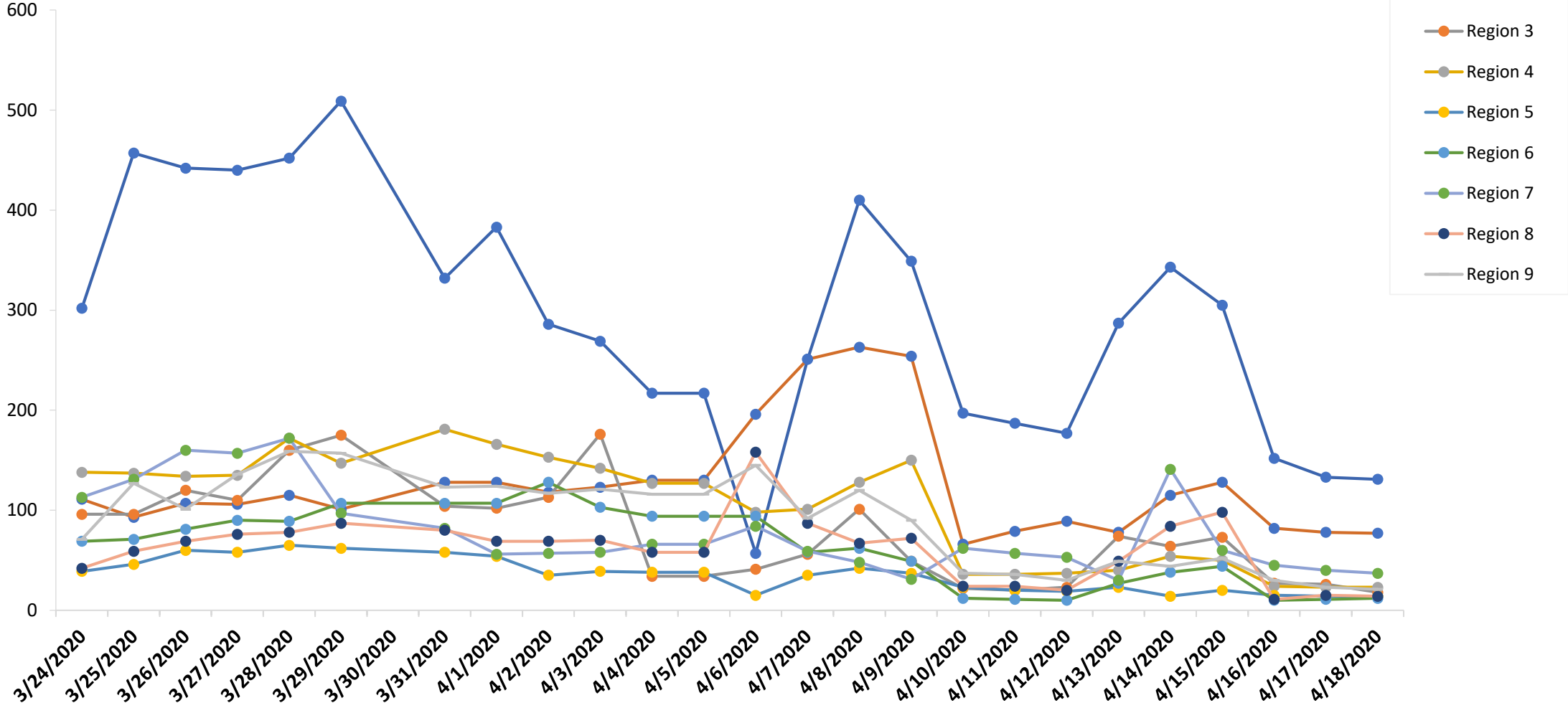
Total COVID-Positive Patients



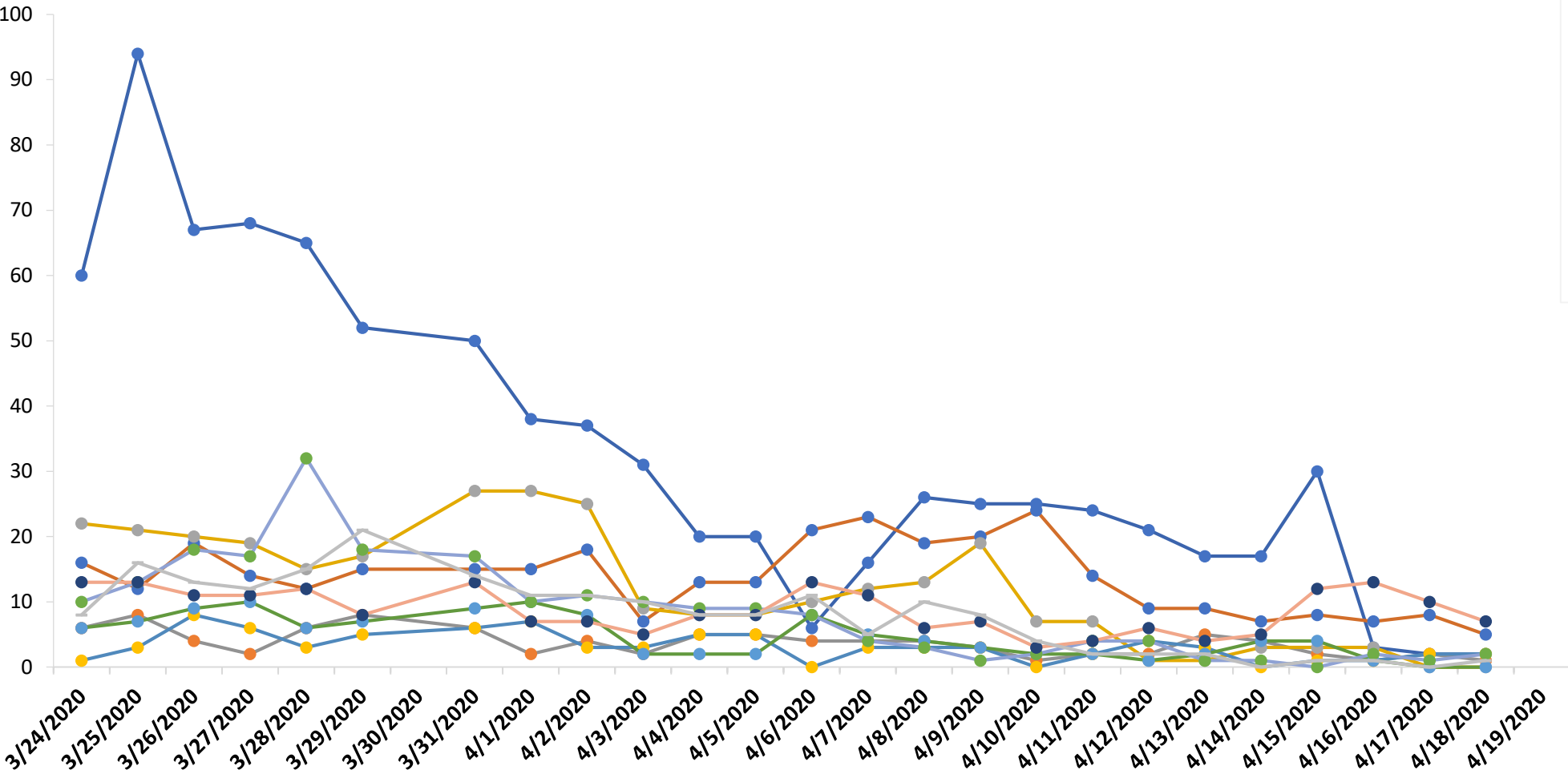
Total COVID-Positive, # on Vents



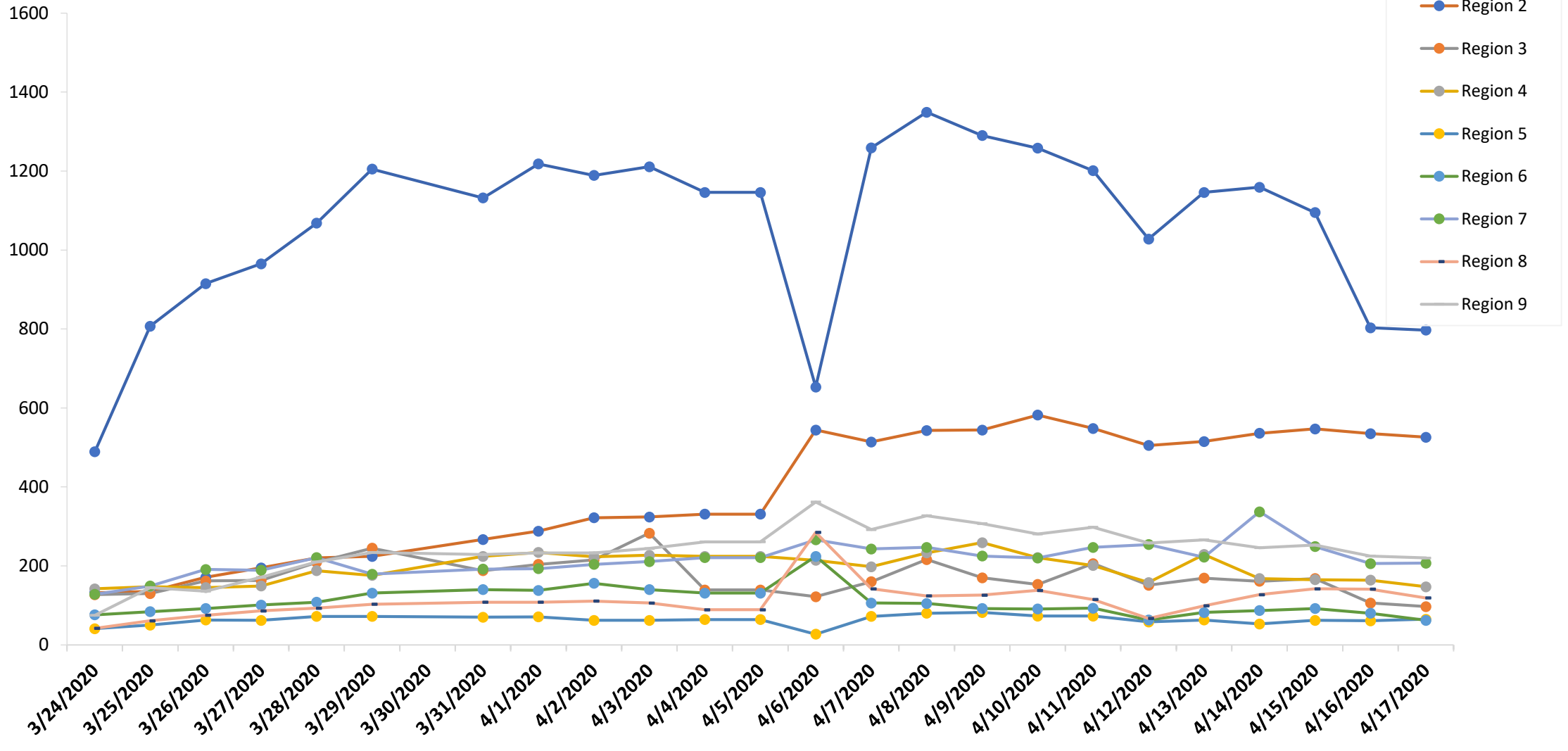
Total COVID-Pending Patients



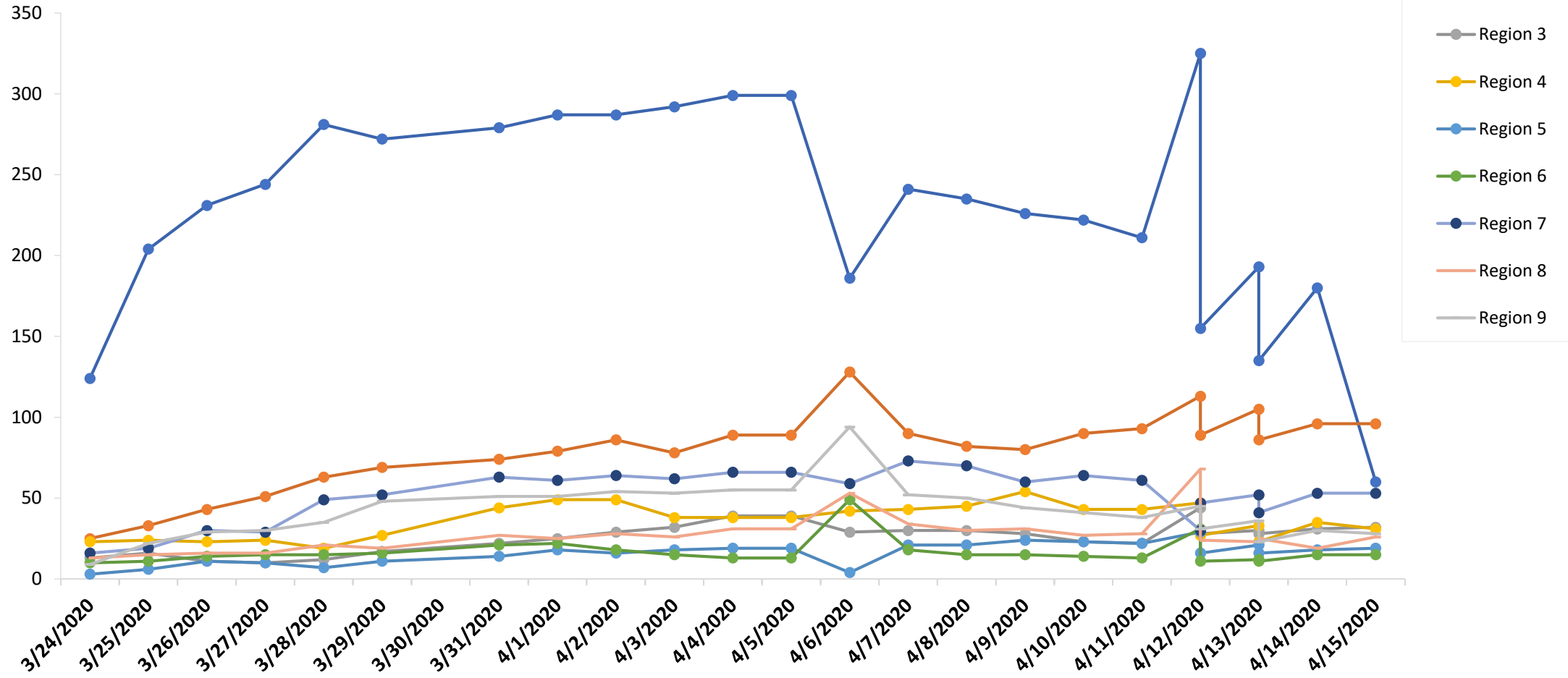
COVID-Pending, # on Vents



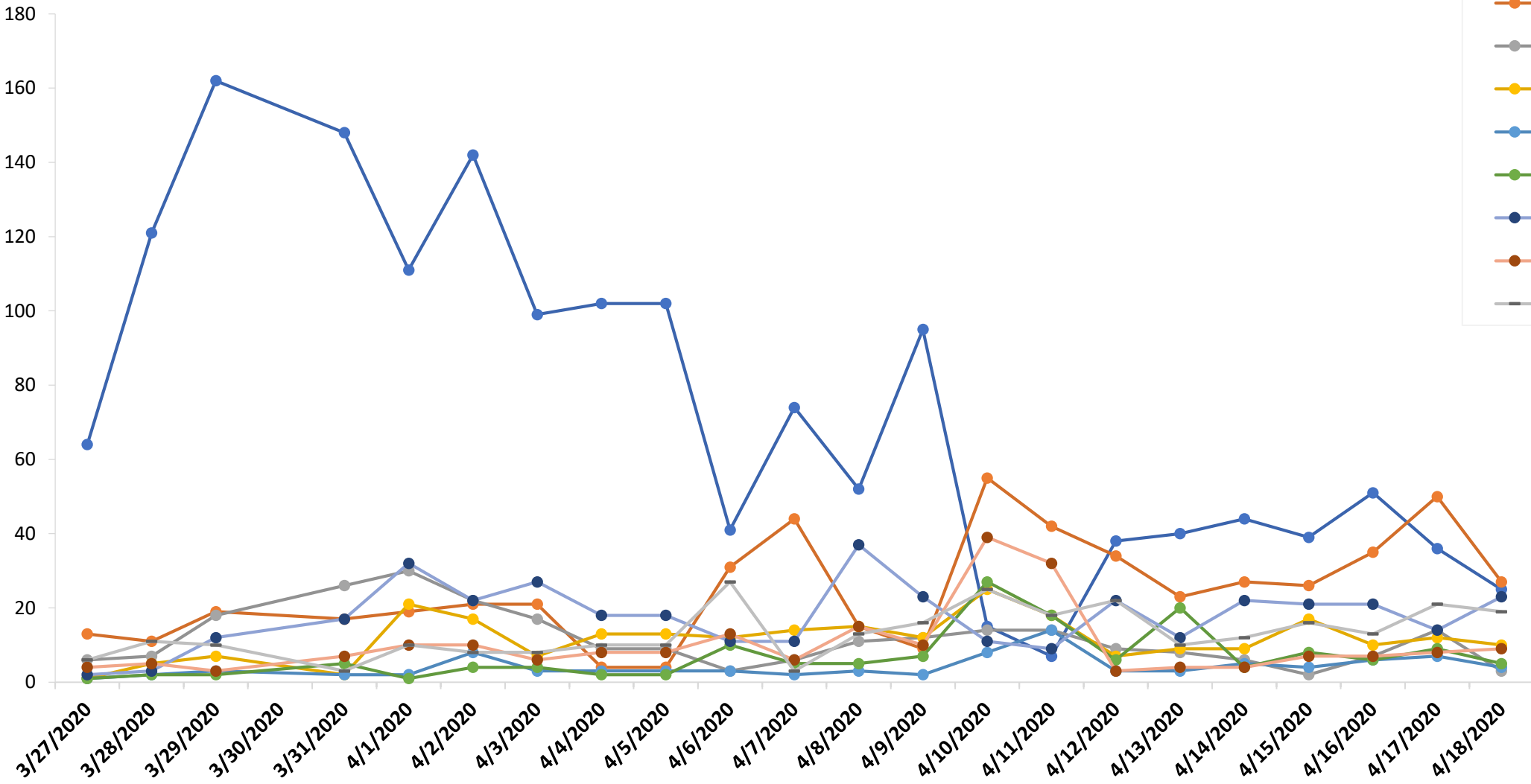
Total COVID Patients



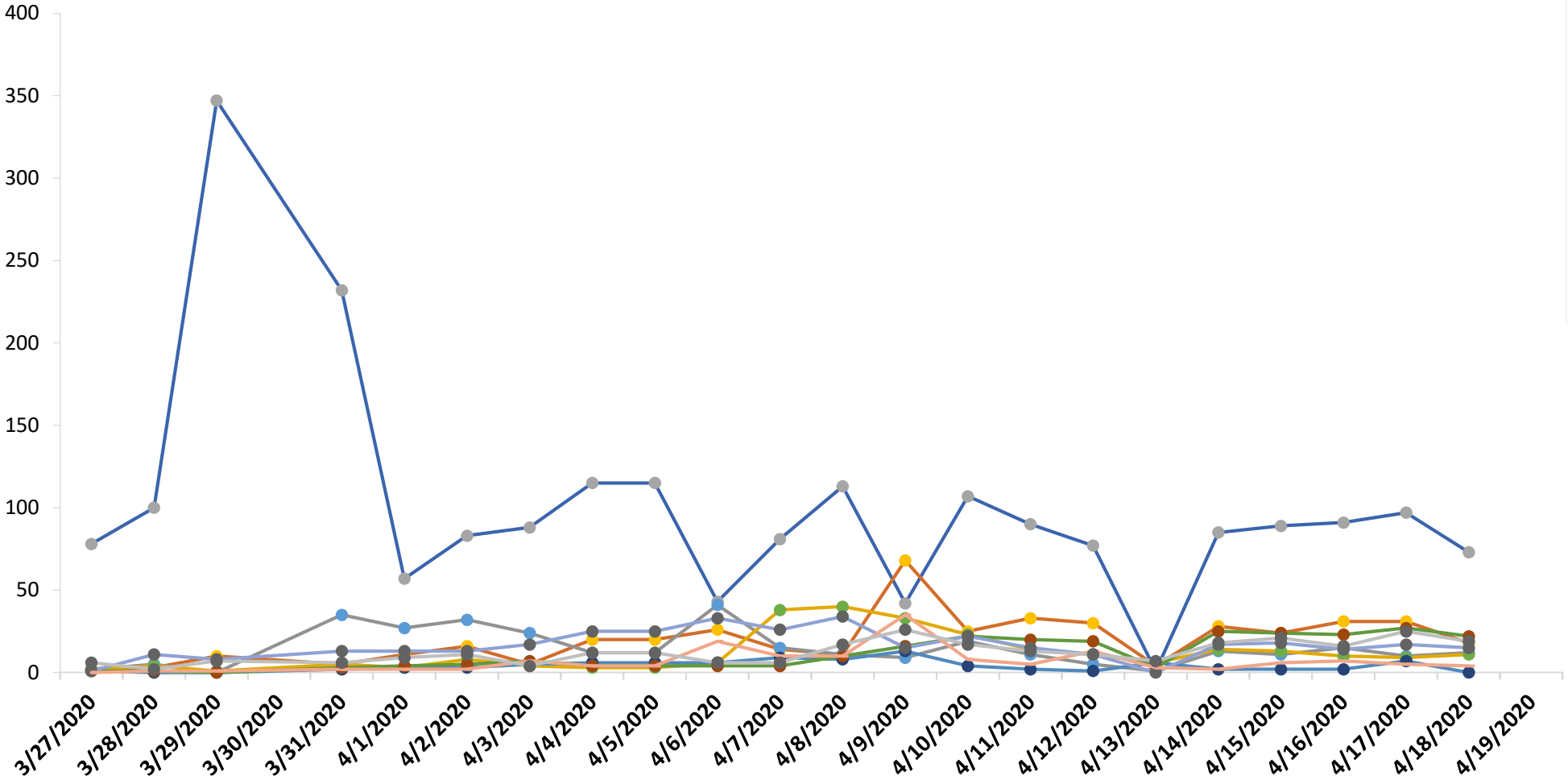
Total COVID Patients on Vents



of New Pts



of Discharges



- Region 1
- Region 2
- Region 3
- Region 4
- Region 5
- Region 6
- Region 7
- Region 8
- Region 9

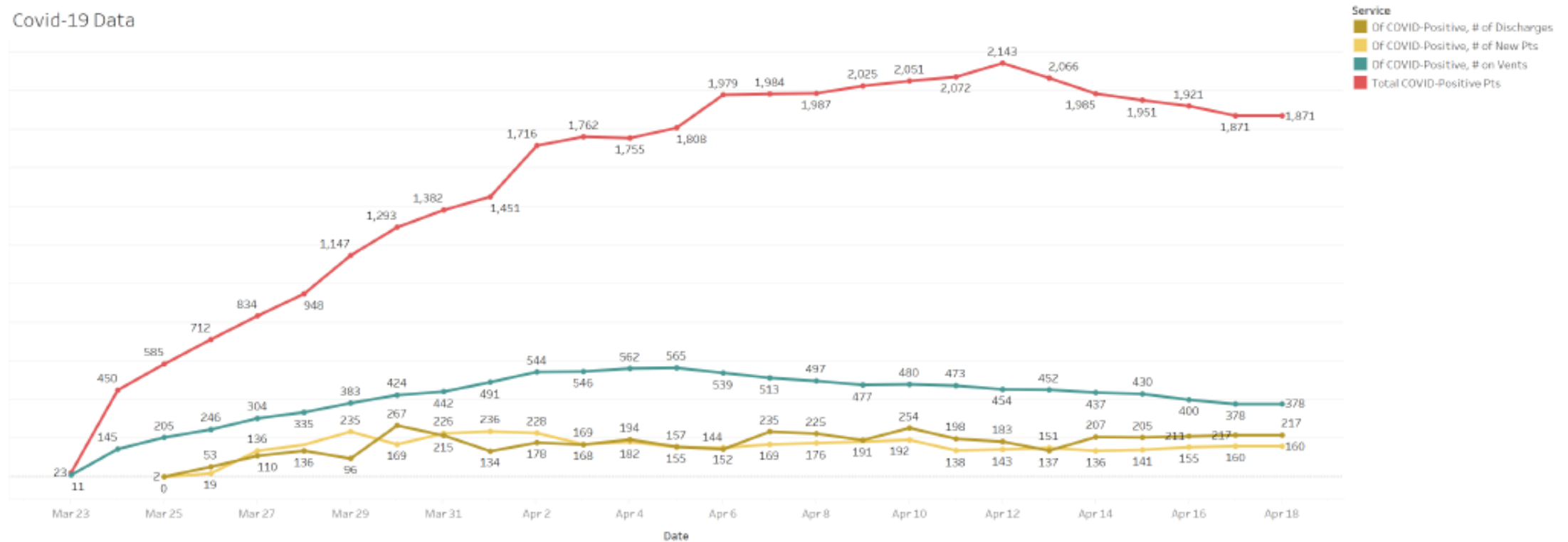


Ventilation report

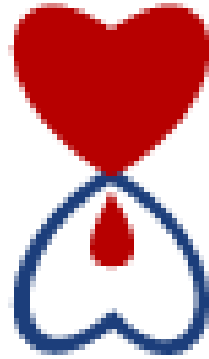
Daily Trends in Patients and Ventilator Use

Region: All
 Facility: All
 Service: Multiple values
 Date: 3/21/2020 to 4/18/2020
 Last Updated: 4/18/2020 6:15:37 AM

Covid-19 Data



The State of the Blood Supply



THE BLOOD CENTER

Serving you for life!

**HEALTHY DONORS
NEEDED NOW!**

Our Donor Centers are OPEN!

SCHEDULE YOUR APPOINTMENT TO DONATE!

(Must be done at least a day in advance)

Did You Know?

About 40% of the population can donate, only about 5% actually do.

- **The Blood Center** supplies Southeastern Louisiana and the Mississippi Gulf Coast www.thebloodcenter.org
- Current inventory levels are at a three day supply and adequate to meet **current** patient demands and any potential short term surge in usage.
- Current blood collections are keeping pace with demand – based on **current** trends – *but this must be replenished daily as it is the blood on the shelf that saves a life*

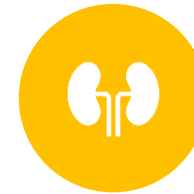




Ask yourself if you're feeling healthy... Good! continue on.



Schedule a blood donation. Blood already on the shelves saves lives, and maintaining a sufficient blood supply is essential to ensure patients in need receive optimal treatment.



Begin the health screening via [FastLane](#) *on the day of your donation* BEFORE you enter a donor center or mobile blood drive



Eat a good meal and don't forget your ID



Arrive as close to your appointment time as possible to reduce your wait and follow the [social distancing measures](#) suggested by the CDC



After your donation, **consider sharing with friends and family** what you did on social media. It's good, positive, and you may encourage someone else into donating



The Blood Center would like to emphasize that sanitation, cleanliness, and safety for our donors, patients, and staff has always been #1. Every day, as a part of our regular operations, our donor centers follow appropriate infection control standards put forth by the U.S. Food and Drug Administration (FDA)

Self-Care

- Self-care is critical for all individuals, especially during a time of crisis. “Take five minutes, ten minutes, whatever you can do, to meditate, get moving, connect with someone, to address your needs”
- - *A key resource is a series of 5 guided mindfulness and meditation videos that are accessible and offer an immediate self-care option. (9-13 minutes each)*
 -
 - *Links to National Mental Health Support sites*
 -
 - *Resources for multiple audiences: First responders, health professionals, caregivers, remote workers and learners, families, parents, and teachers.*
-
- Visit selfcaretips.tulane.edu (<https://selfcaretips.tulane.edu/>) for more information.





SELF-CARE RESOURCES

Provided by the Tulane University School of Social Work

Updated content weekly
Subscribe for updates
<https://selfcaretips.tulane.edu/>



MEDITATE

Take a mental break and sit quietly for a few moments.

GUIDED MEDITATION VIDEOS



GET MOVING

Walk around the block. Go for a bike ride. Take an online yoga class.

SUGGESTED ACTIVITIES



CONNECT

Spend 10 minutes on the phone with a close friend. Video chat with a relative.

WAYS TO BE SOCIAL WHILE DISTANCED



INDULGE

Watch a movie or TV show. Create art. Play a video game.

ARTS & ENTERTAINMENT RECOMMENDATIONS